

COMMITTEE AGENDA



Consolidated as of June 30, 2016

TO **Public Services Committee**

DATE Monday, July 4, 2016

LOCATION Council Chambers, Guelph City Hall, 1 Carden Street

TIME 5:00 p.m.

DISCLOSURE OF PECUNIARY INTEREST AND GENERAL NATURE THEREOF

CONFIRMATION OF MINUTES – June 8, 2016 open meeting minutes

PRESENTATIONS (Items with no accompanying report)

James R. Taylor, President of Trees for Guelph, presenting the Trees for Guelph 2015 Annual Report. (presentation)

CONSENT AGENDA

The following resolutions have been prepared to facilitate the Committee's consideration of the various matters and are suggested for consideration. If the Committee wishes to address a specific report in isolation of the Consent Agenda, please identify the item. The item will be extracted and dealt with separately. The balance of the Public Services Committee Consent Agenda will be approved in one resolution.

ITEM	CITY PRESENTATION	DELEGATIONS	TO BE EXTRACTED
PS-2016.11 Town of Shelburne Council Resolution regarding the Discontinuation of Intensive Behaviour Intervention Removed at the request of Ms. Sidebottom			
PS-2016.12 Community Gardens Program Annual Report			
PS-2016.13 Guelph Sports Hall of Fame Annual Report			

PS-2016.14 Spring 2016 to Winter 2021 U-Pass Contract Renewal			
--	--	--	--

Resolution to adopt the balance of the Public Services Committee Consent Agenda.

ITEMS EXTRACTED FROM CONSENT AGENDA

Once extracted items are identified, they will be dealt with in the following order:

- 1) delegations (may include presentations)
- 2) staff presentations only
- 3) all others.

AUTHORITY TO MOVE INTO CLOSED MEETING

THAT the Public Service Committee now hold a meeting that is closed to the public, pursuant to the Municipal Act, to consider:

PS-C-2016.1 Resident Appointments to the Wellbeing Grant Allocation Panel for 2016

Section 239 (2)(b) of the Municipal Act related to personal matters about an identifiable individual, including municipal or local board employees

CLOSED MEETING

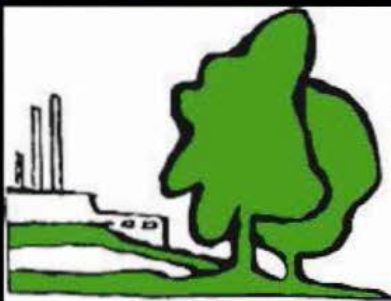
OPEN MEETING

Closed Meeting Summary

STAFF UPDATES AND ANNOUNCEMENTS

ADJOURN

NEXT MEETING



TREES for GUELPH

"a project for improving Guelph's urban environment"





Project Background

- TFG formed in 1990
- **Objectives:** environmental quality, education & leadership
- We have planted over 160,000 trees!



Brant can't plant enough trees ...

... Actually, it can. The 20 or so white birch and white pine trees planted Wednesday at Brant Avenue school with help from about 50 primary students are the last ones to be planted in a naturalization area at the northeast end of the school property, says teacher Ruth Ann Gardiner. The Trees for Guelph organization supplied the trees and expertise. "What we want to do is attract birds and butterflies and help the students realize how long it takes for trees to grow and what their needs are, and increase awareness of our natural environment and the importance of protecting it," said Gardiner. At left, Grade 3 student Riley Manderla pours compost, while at right Grade 3 student Tyler Cox and educational assistant Sandra Richards spread compost around a tree.

TRIBUNE PHOTOS BY DOUG HALLETT



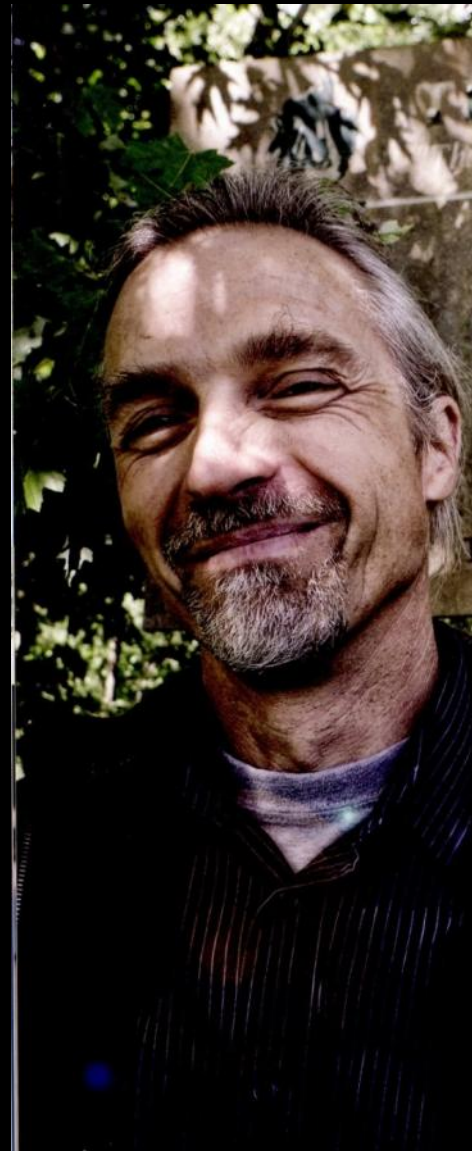
Project Management

Partnerships

- McNeil, Chamber, Co-operators, Guelph Hydro, Hydro One, Toyota Canada, Union Gas, Bridal Boutique, TD Friends of the Environment, School Boards and the City.

Volunteers

- 5,000 plus each year!!



WHEN DAVID & GOLIATH COLLABORATE: *Trees for Guelph & McNeil Consumer Healthcare*

by Chris Tiessen

If the City of Guelph is to meet its ambitious goal of achieving 40% tree canopy coverage by 2020, it will require complex collaborations between multiple local stakeholders. Most importantly, it will require a few visionary trailblazers to see this dream through to reality.

While there are a number of local urban forestation initiatives underway that are doing great things (including Rotary Forest, Ignatius' forestation initiatives, TD's Green Streets, and more), the cross-sectoral collaboration between volunteer-run non-profit Trees for Guelph and local heavyweight employer McNeil Consumer Healthcare is just plain awe-inspiring.

Founded in 1990 by a group of volunteers who wanted to improve Guelph's local environment and environmental education through tree planting initiatives, Trees For Guelph has since facilitated the planting of 111,000+ trees in Guelph's urban landscape.

The majority of planters are local students – many of whom, as Trees for Guelph Director Martin Neumann notes, find themselves plunging their hands into fresh soil for the very first time during their Trees for Guelph planting sessions. In 2011, more than 2700 students from 11 schools helped plant 5,316 trees and shrubs across 17 sites. In 2012, over 3900 students from 12 schools helped plant 5,245 trees and shrubs at 19 sites.

Incredible numbers, no doubt! But not at all possible without the help of funders who see the importance of urban tree planting – which includes improved air quality, reduced noise, sources of shade, improved water quality, sequestering carbon, and up to a 25% reduction in net cooling and heating usage in urban landscapes (up to a \$200 savings per tree).

McNeil has seen, and continues to see, the importance of urban forestation. A founding partner of Trees For Guelph and continued presence on its Board, McNeil has consistently funded the purchase of 5,000 trees per year for Trees for Guelph, to the tune of \$15,000-20,000 annually. With an initial goal of offsetting its own carbon footprint, McNeil's funding now helps extend the urban forest to all corners of Guelph.

As Trees for Guelph Coordinator Moritz Sanio remarks: 'What McNeil continues to do is simply amazing. What they make possible with their funding – not only for the environment but also for the kids who get such a kick out of planting in their own backyards – is breathtaking. It'd be so great to see other local companies do what McNeil does on a regular basis.' Indeed, this collaboration is incredible on so many levels – for its positive impact, the 'unlikely' partnership of the players, the fact that this cross-



Education



Environmental Tool Kit Offsetting CO₂ Emissions

Learning to:



Conserve
Prevent
Reduce
Replenish
Offset





Guelph Hydro Partnership



1-2-3, Plant a Tree

Sign up for ebilling through myenergy view, Guelph Hydro's online customer portal, and you will help build Guelph's urban forest.

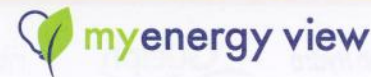
Registering for myenergy view gives you convenient, secure, 24/7 access to your Guelph Hydro account. View current and past bills, and track your electricity consumption to make it easier to adjust how and when you use electricity.

As an added bonus, for every 10 customers who sign up for ebilling, we will plant a tree through Trees for Guelph.

Sign up today! Visit:
www.guelphhydro.com/myenergyview
to learn more, or scan the QR code below using your mobile device.



Scan using your mobile device to help build Guelph's urban forest!



64987-i1-201506



Community Planting Days





Community Planting Days

TD Friends of the Environment



O'Connor Park



Hydro One Corridor Planting Day: 2016





Guelph Canopy Project

- Canopy as a measure
- Benefits of trees
- What percentage should tree canopy cover?
- Guelph policy is 40%
- Guelph Chamber of Commerce & Trees for Guelph Partnership



Urban Forest Management Plan

- September 2012
- 20 year plan
- 22 recommendations:
- #6 *Urban tree cover potential plantable spaces analysis;*
- #16 *Develop a Greening Strategy building on #6;*
- #22 *Community engagement with urban forest initiatives*

Research

- University of Guelph
Brommer, Corry, Taylor
- Canopy level in 2014: 28.6%
- Given available plantable space; 52 % would have to be tree canopy

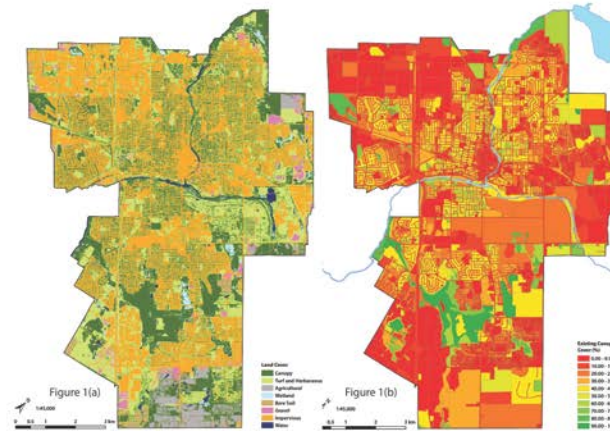


FIGURE CAPTIONS

- 1 (a) Land cover types and (b) existing canopy proportions, City of Guelph.
- 2 Sample of city canopy space from SPOT6 imagery.
- 3 (a) Potential plantable space and (b) relative canopy cover.
- 4 Maximum canopy cover.
- 5 Example landscape architectural designs to achieve target canopy proportions in a commercial land use, considering growth and mortality rates.



53rd IFLA WORLD CONGRESS
INTERNATIONAL FEDERATION OF LANDSCAPE ARCHITECTS

IFLA 2016
53rd IFLA WORLD CONGRESS
INTERNATIONAL FEDERATION OF LANDSCAPE ARCHITECTS
2015 OCT 12th - 19th - 16th SEP 2015

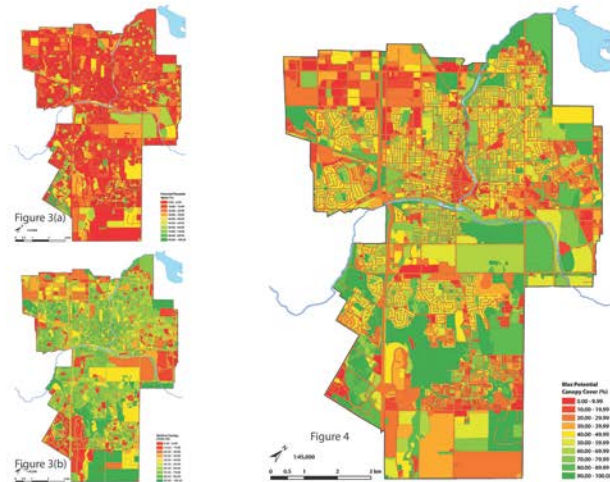
Tree canopy assessment techniques for improving green infrastructure

Guelph, Ontario, Canada, 2015.



Designer
Jessica Brommer,
Robert Corry,
James Taylor

University of Guelph,
Guelph, Ontario,
Canada



PROJECT DESCRIPTION

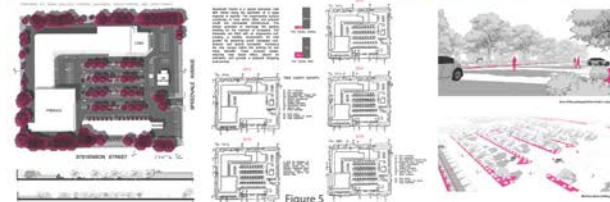
Tree canopy cover is used as one of many indicators of the extent of urban green infrastructure in urban environments. Trees provide a number of environmental services including urban cooling and carbon capture that serve to reduce global warming. This study developed a spatial form model to determine if the canopy target of 40% for Guelph, Ontario is achievable given physical and policy constraints. The model used a geographic information system and satellite imagery to determine existing land covers and urban infrastructure. The study determined existing canopy cover, potential plantable space and maximum potential canopy cover in different land use zones. The results indicated that a 40% canopy cover is achievable if 52% of the plantable space becomes canopy cover. Industrial and employment, institutional, low-density residential, commercial and park lands should be variably targeted for future planting efforts due to their large plantable space areas and/or low relative canopy cover. The study concluded by establishing specific canopy cover goals for the various land uses in the city.

We used ArcGIS to construct a model using recent (2014) leaf-on SPOT6 satellite imagery and interpretation to measure existing land surface cover and potential for change within several land divisions (e.g., zoning type, census neighbourhood, city ward) to answer four principal questions:

1. What the current canopy coverage?
2. Is there adequate plantable space to achieve 40%?
3. In what land use zones can the 40% target be met?
4. What land use contributions meet 40% city-wide?

The City's existing tree canopy is currently 28.6% (2014). Maximum potential canopy cover is 50.8% when considering all plantable space, yet not all plantable space can become canopy (e.g., sports fields). To achieve the city-wide goal of 40%, an average of 52% of plantable space must have canopy. Land uses with the most plantable space and canopy potential include industrial/employment, institutional, low-density residential, and parks.

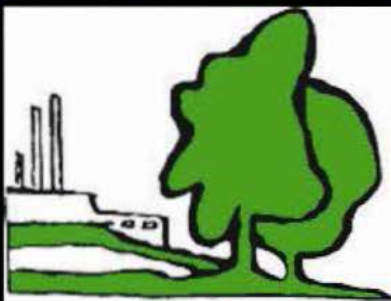
Landscape architecture student projects used this information to prototype how land uses could achieve the target canopy proportions over time with growth/mortality rates (example left).





Strategy Going Forward

- Canada 150
- Engage the City and private land owners in the Canopy Project partnership
- Keep planting



TREES for GUELPH

"a project for improving Guelph's urban environment"

