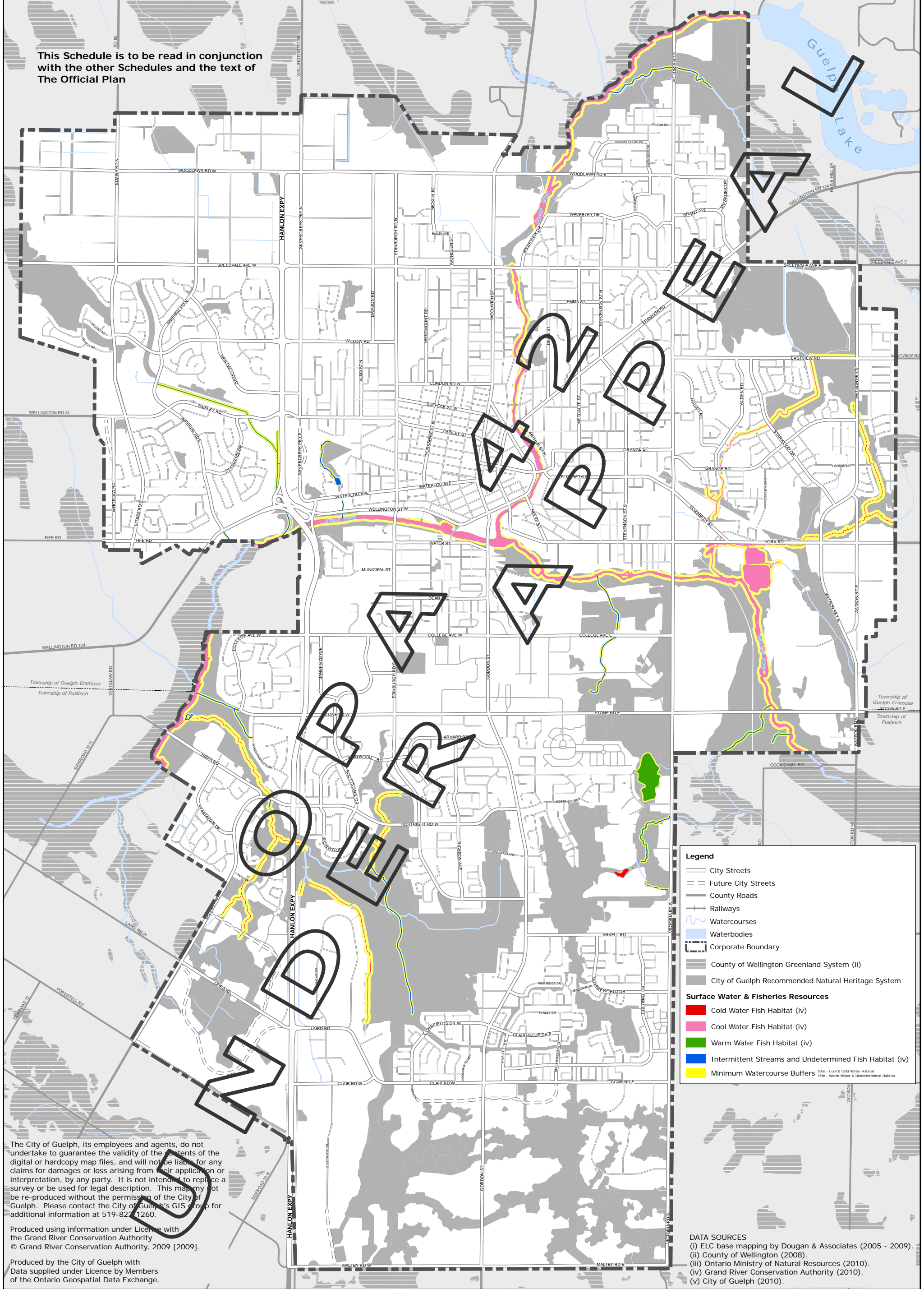


This Schedule is to be read in conjunction with the other Schedules and the text of The Official Plan



The City of Guelph, its employees and agents, do not undertake to guarantee the validity of the contents of the digital or hardcopy map files, and will not be liable for any claims for damages or loss arising from their application or interpretation, by any party. It is not intended to replace a survey or be used for legal description. This map may not be re-produced without the permission of the City of Guelph. Please contact the City of Guelph's GIS group for additional information at 519-827-1260.

Produced using information under Licence with the Grand River Conservation Authority
© Grand River Conservation Authority, 2009 [2009].

Produced by the City of Guelph with Data supplied under Licence by Members of the Ontario Geospatial Data Exchange.

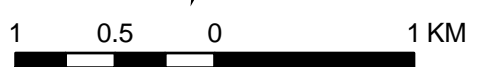
Legend

- City Streets
- Future City Streets
- County Roads
- Railways
- Watercourses
- Waterbodies
- Corporate Boundary
- County of Wellington Greenland System (ii)
- City of Guelph Recommended Natural Heritage System

Surface Water & Fisheries Resources

- Cold Water Fish Habitat (iv)
- Cool Water Fish Habitat (iv)
- Warm Water Fish Habitat (iv)
- Intermittent Streams and Undetermined Fish Habitat (iv)
- Minimum Watercourse Buffers
 - 30m - Cool & Cold Water Habitat
 - 15m - Warm Water & Undetermined Habitat

DATA SOURCES
 (i) ELC base mapping by Dougan & Associates (2005 - 2009).
 (ii) County of Wellington (2008).
 (iii) Ontario Ministry of Natural Resources (2010).
 (iv) Grand River Conservation Authority (2010).
 (v) City of Guelph (2010).



CITY OF GUELPH OFFICIAL PLAN

SCHEDULE 4B: NATURAL HERITAGE STRATEGY

Surface Water and Fish Habitat



Projection: UTM 17N NAD83
 Produced by the City of Guelph
 Planning Services
 July 27, 2010

g:\gis_staging\Planning\OFFICIAL PLAN MAPPING NEW\Schedule4B_NH\SOP\Schedule4B_FISHERIESRESOURCES.mxd