

Jubilee Park Master Plan Process

VISIONING WORKSHOP

September 24

**WHAT WILL YOUR
PARK LOOK LIKE?**

Help create your park plan



WORKSHOP AGENDA

- 1.0 INTRODUCTION, BACKGROUND AND CONTEXT OF THE PARK
- 2.0 VISIONING & IDEAS PRESENTATION
- 3.0 BREAK
- 4.0 GROUP WORK SESSION
- 5.0 BREAK
- 6.0 SUMMARY OF WORK SESSION & QUESTIONS
- 7.0 NEXT STEPS



COMMUNITY

ENGAGEMENT

Two public workshops, two sessions for each day:

- **Today: Visioning:**
 - What do you want your park to look like?
 - What are your preferred park elements?
- **November 19, 2013: Concept Selection**
 - The design team will present three park concepts that implement comments received and park elements that receive the most support, for public review and comment.
- **Ongoing Online Discussion:**
guelph.ca/jubilee



HISTORY

Jubilee Park has been named in honour of Queen Elizabeth II's Diamond Jubilee.



CONTEXT

- Park is 2.0 Hectares (4.9 acres)
- New construction in Kortright East Community – 2 of 5 phases built.
- SWM pond to the south
- Street frontage to the east and west.
- School site to the north
- Wetland further to the north



POLICY & STRATEGIC PLANNING

- Zoned P3 – Community Park in the City of Guelph Zoning Bylaw
- P3 Zone allows specific uses.
- Part of the City of Guelph Trails Master Plan



POLICY & STRATEGIC PLANNING

Hierarchy of Parks:

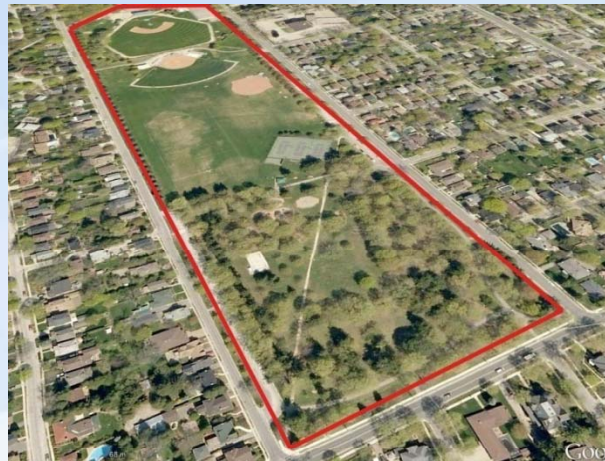
- Neighbourhood
- Community
- Regional



Carter Park
Neighbourhood Park
1.4 Hectares (3.5
acres)



St. George Park
Community Park
1.7 Hectares (4.2 acres)

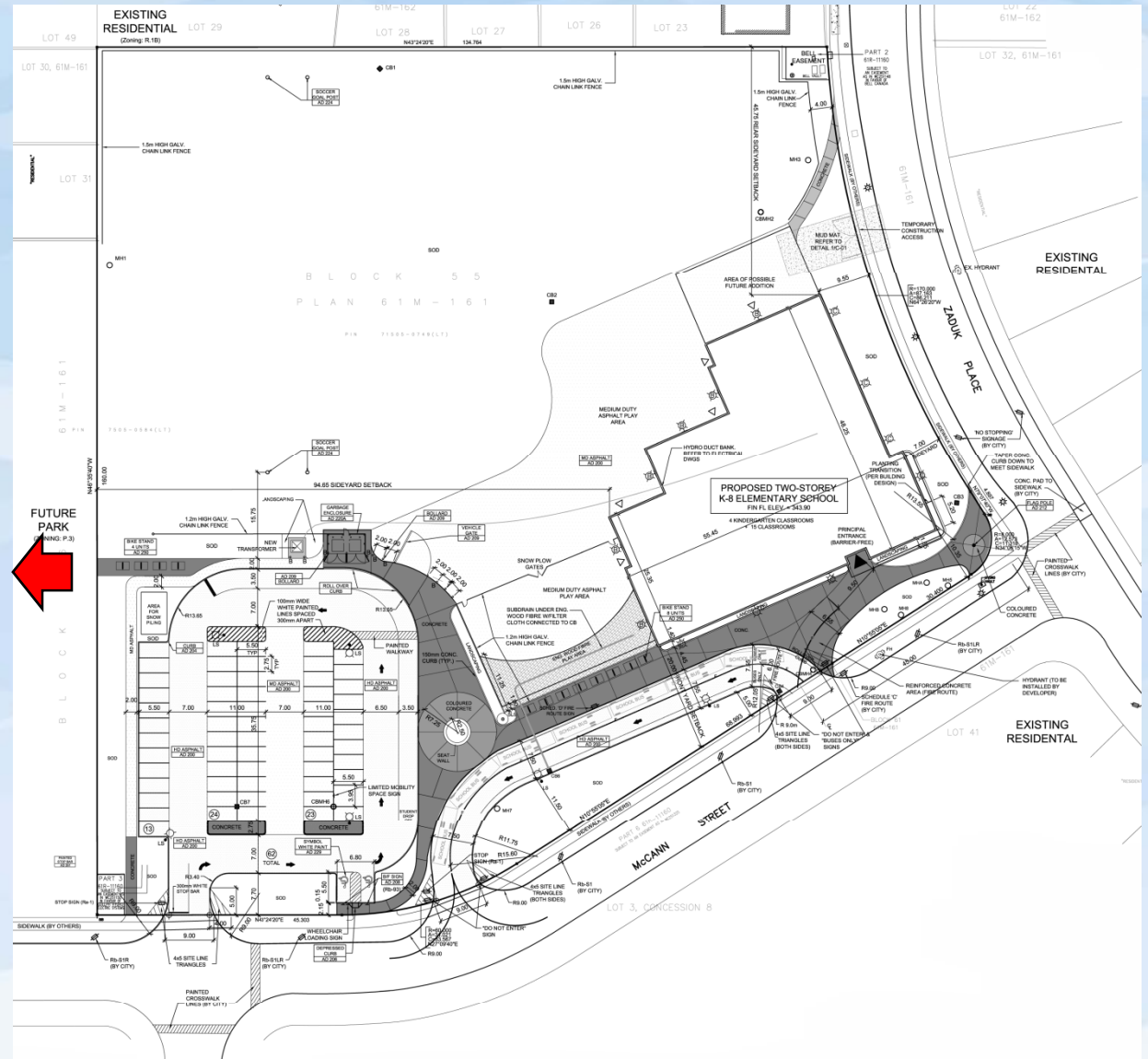


Exhibition Park
Regional Scale
12.3 Hectares (30.5
acres)



SCHOOL SITE

- Upper Grand District School site immediately north of the park
- Parking lot as park border element
- Pedestrian connection from school to Sweeney Drive



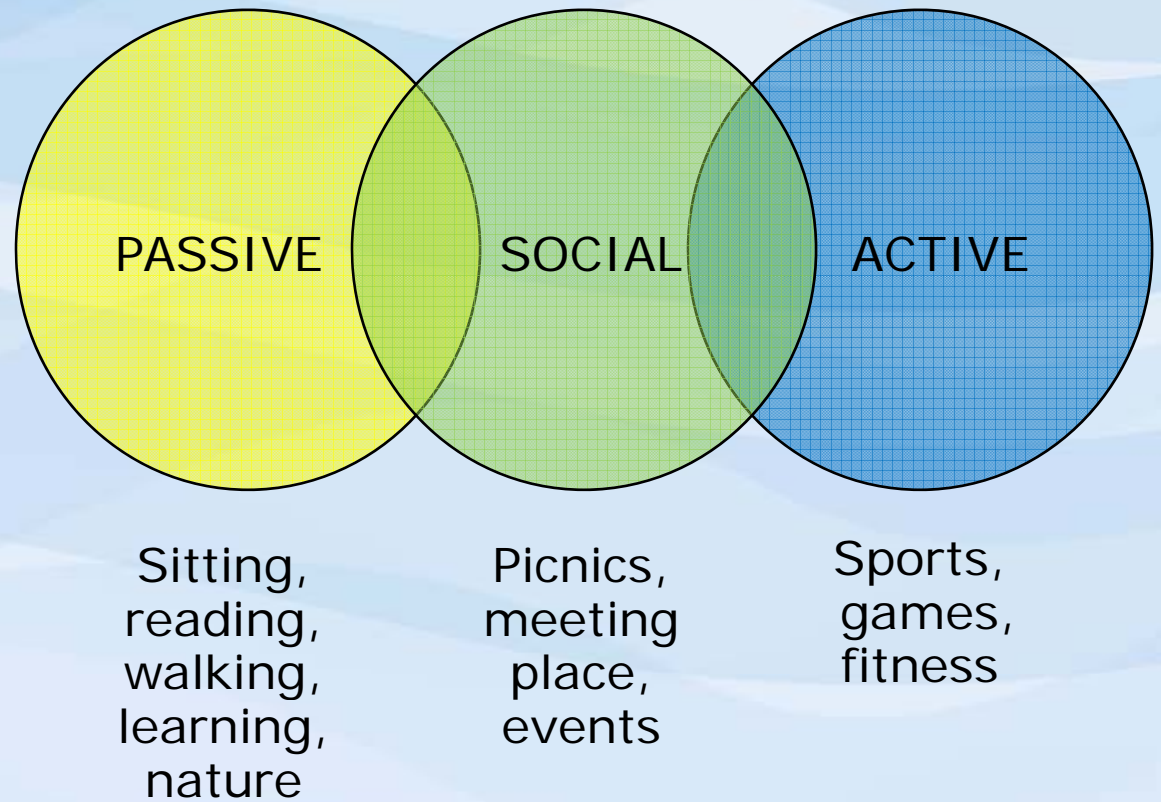
KEY DESIGN CONSIDERATIONS

- **BUDGET**
Construction costs and ongoing maintenance costs
- **SAFETY**
Appropriate separation between uses, Crime Prevention through Environmental Design (CPTED)
- **ACCESSIBILITY**
City of Guelph Facility Accessibility Design Manual (FADM 2012), Accessibility for Ontarians with Disabilities Act.



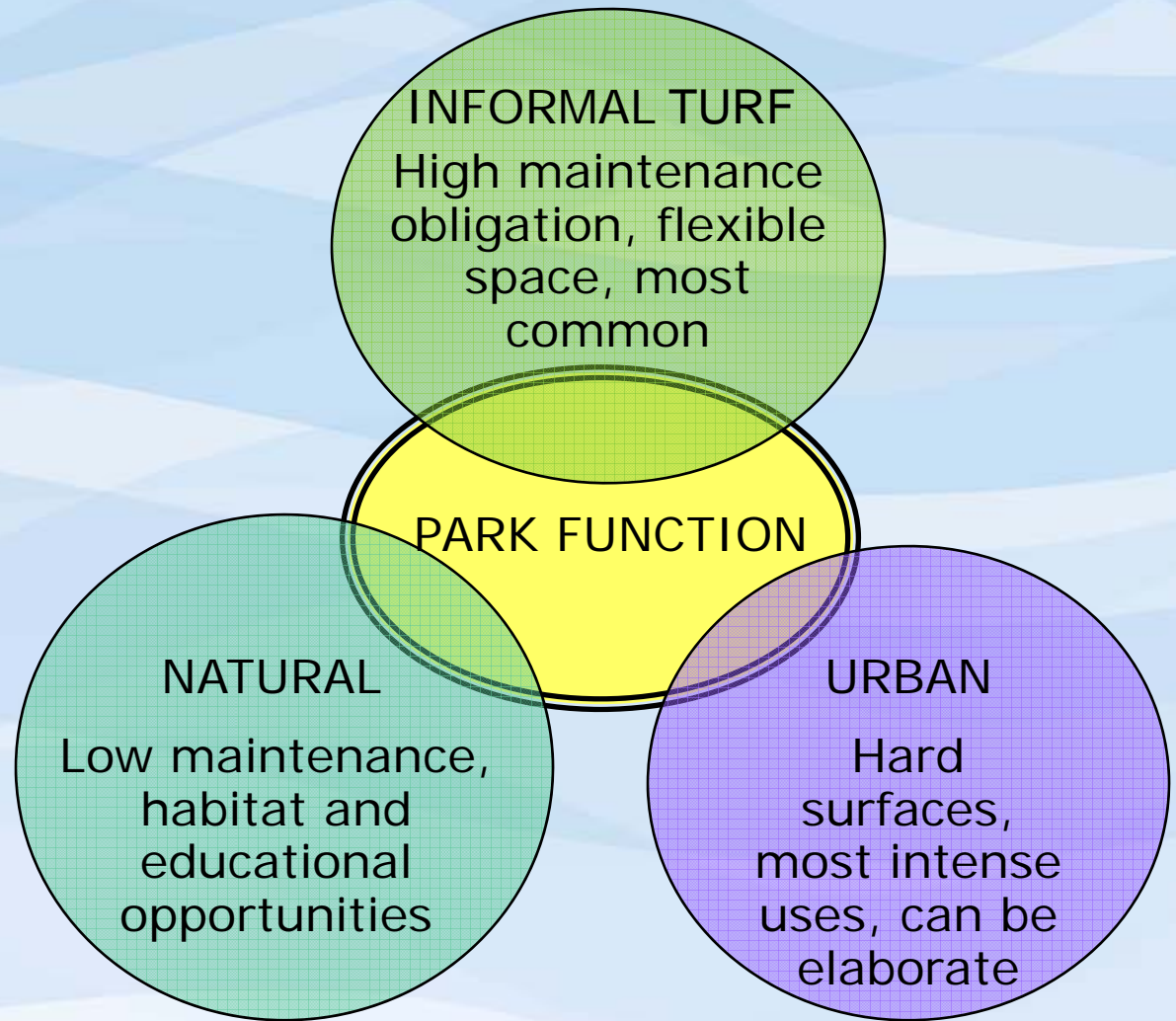
INTRODUCTION TO PARK DESIGN

- PARK FUNCTIONS:
- How parks are used.



INTRODUCTION TO PARK DESIGN

- PARK AESTHETICS
- How parks look
- Can influence function
- Often more than one style in a park



INTRODUCTION TO PARK DESIGN

PARK AESTHETICS –
How parks look and
feel

- “NATURAL”
- Corktown Common,
Toronto



INTRODUCTION TO PARK DESIGN

PARK AESTHETICS –
How parks look and
feel

- “NATURAL”
- Joe Veroni Park, Guelph



INTRODUCTION TO PARK DESIGN

PARK AESTHETICS –
How parks look and
feel

- “NATURAL”
- Huron Natural Area,
Kitchener



INTRODUCTION TO PARK DESIGN

PARK AESTHETICS –
How parks look and
feel

- “INFORMAL
GREENSPACE”
- Joe Veroni Park, Guelph



INTRODUCTION TO PARK DESIGN

PARK AESTHETICS –
How parks look and
feel

- “INFORMAL
GREENSPACE”
- Waterloo Park,
Waterloo



INTRODUCTION TO PARK DESIGN

PARK AESTHETICS –
How parks look and
feel

- “INFORMAL
GREENSPACE”
- Morningcrest Park,
Guelph



INTRODUCTION TO PARK DESIGN

PARK AESTHETICS –
How parks look and
feel

- “URBAN”
- Spencer Smith Park,
Burlington



INTRODUCTION TO PARK DESIGN

PARK AESTHETICS –
How parks look and
feel

- “URBAN”
- Lawern Harris Park,
Toronto



INTRODUCTION TO PARK DESIGN

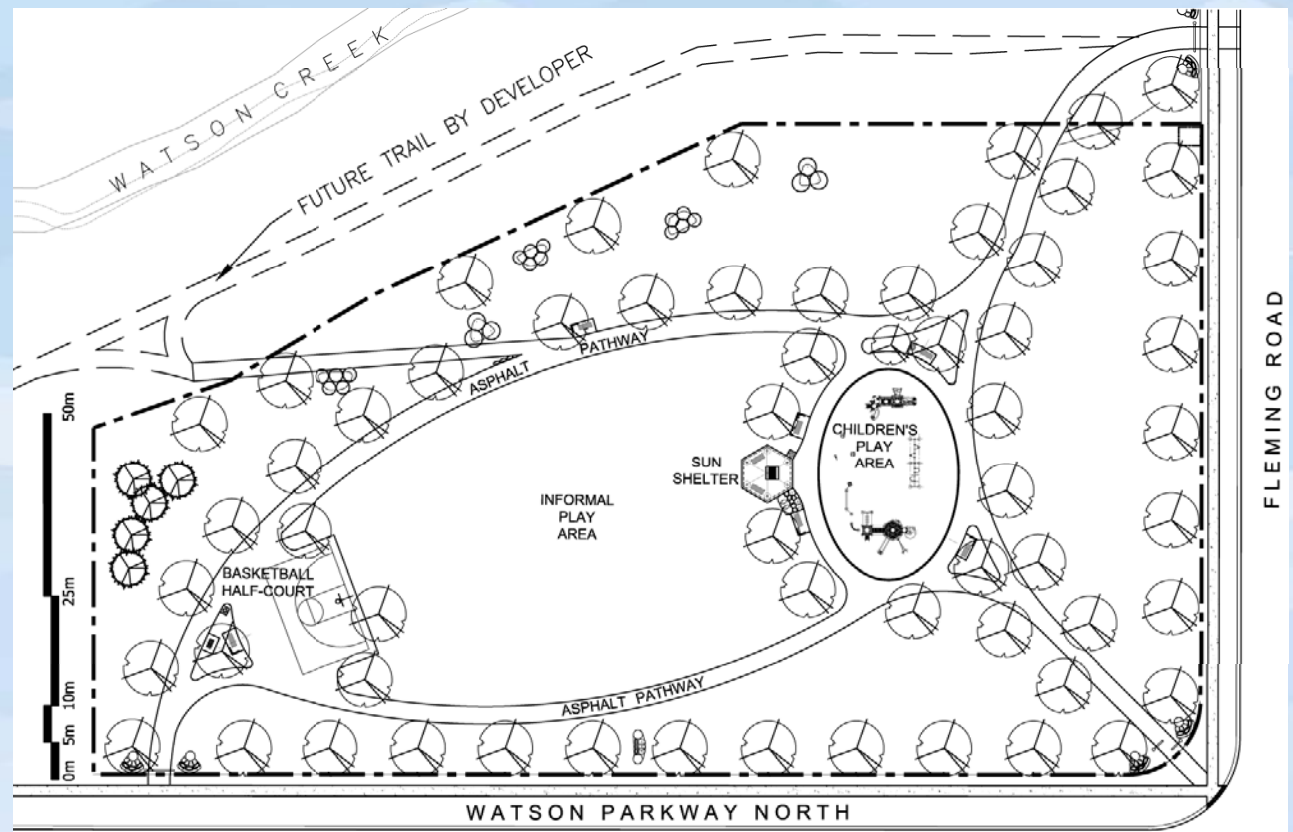
PARK AESTHETICS –
How parks look and
feel

- “URBAN”
- Simcoe Wave Deck,
Toronto



TYPICAL PARK ELEMENTS

- Trails
- Medium play structure
- Tree planting
- Benches
- Bike racks
- Shade structure
- Garbage receptacles
- Informal open space





PREMIUM ELEMENTS

Large Themed Play Structure





PREMIUM ELEMENTS

All season rink





INTERMEDIATE ELEMENTS

Medium Play Structure



INTERMEDIATE ELEMENTS

Custom Play Structure – Rope Course



INTERMEDIATE ELEMENTS

Outdoor Stage – Movies in the park

























MINOR ELEMENTS

Educational/Historical Elements



MINOR ELEMENTS

Sensory Playground



Sound

Scent

Vision





CREATIVE LANDSCAPES

Music Garden, Toronto

















COMMUNITY ENGAGEMENT

Breakout into individual groups.

1. Suggest new Park Elements to add to the list.

BREAKOUT TO INDIVIDUAL TABLES

1. Rank how you like each Park Aesthetic style:
 1. Natural
 2. Informal Green Space
 3. Urban
2. Assemble a Park Budget (Form provided)
3. Vote for your **5 favourite Park Elements** on the master list with stickers provided.
4. Put a red sticker beside any elements you **don't want to see**.
5. Provide any other written comments you wish.



COMMUNITY ENGAGEMENT

Park Budget

100 Points for the Park

1. Premium Elements (30-50 Points each)
2. Intermediate Elements (10-20 Points each)
3. Minor Elements (5 Points each)

For this exercise, the following **Basic Elements** are provided at no additional point cost:

1. Trash receptacles
2. Tree planting
3. Trails
4. Site furniture (Picnic, Bike racks, benches)



COMMUNITY
ENGAGEMENT

NEXT STEPS

Concept Selection Workshop

November 19, 2013

Session 1 – 10 a.m.-noon

Session 2 – 7-9 p.m.

Best Western Plus Royal Brock Hotel and
Conference Centre

716 Gordon Street, Guelph

Childcare is available with advance registration.

Ongoing Online Discussion:

guelph.ca/jubilee

