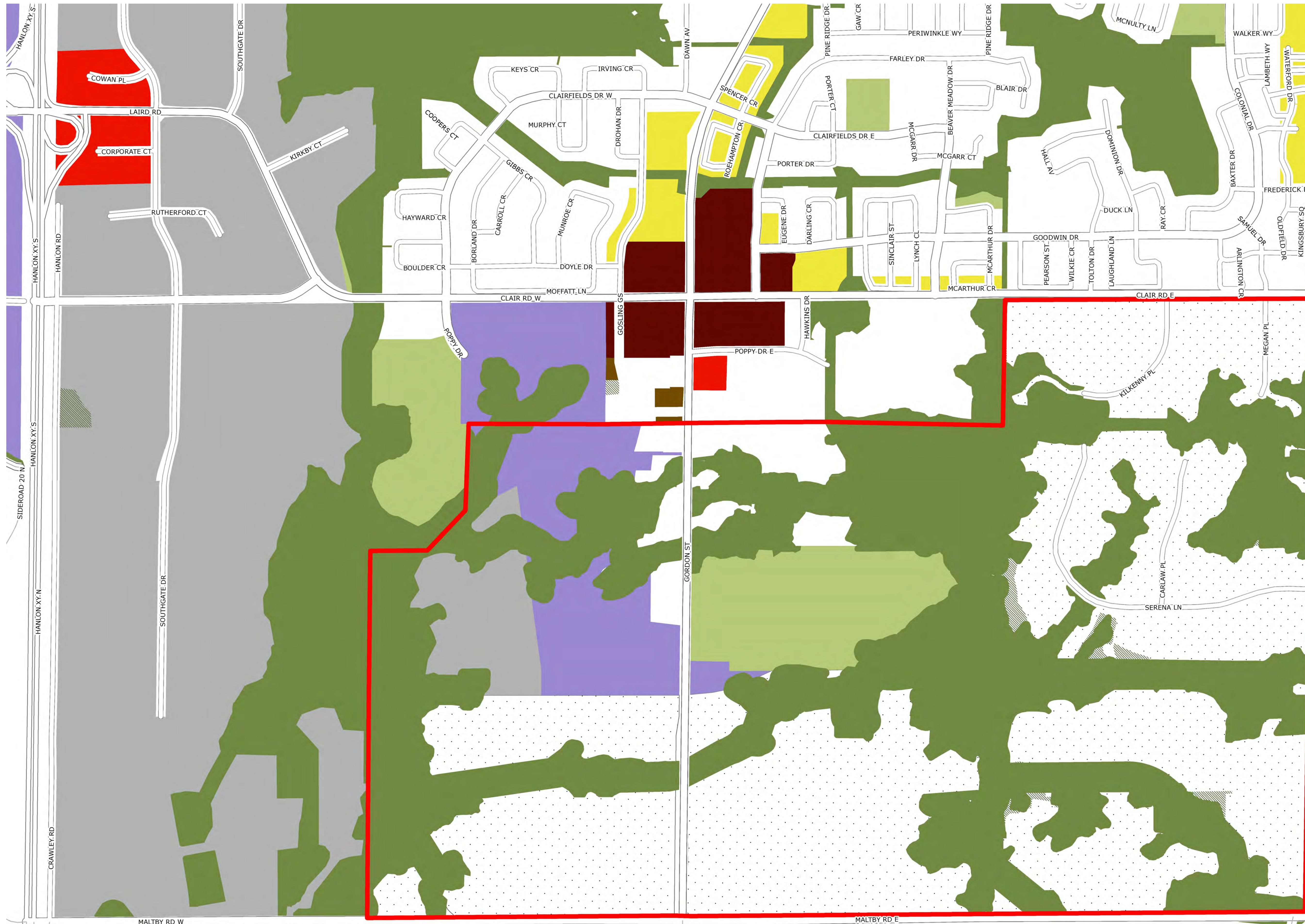


OFFICIAL PLAN: LAND USE DESIGNATIONS



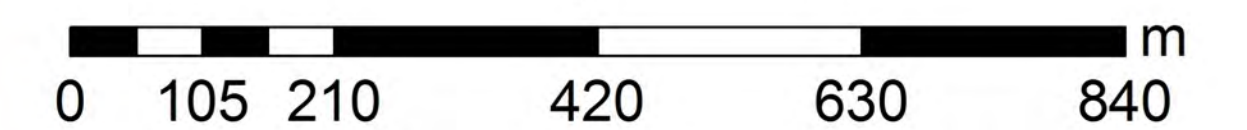
2001 Official Plan
September 2014
Consolidation

Clair - Maltby Secondary Plan



Legend

- Railways
- Streets
- Watercourses
- Waterbodies
- City Boundary
- Township Boundary
- Land Use Designations**
- General Residential
- Medium Density Residential
- High Density Residential
- Central Business District
- Intensification Area
- Mixed Use Node
- Neighbourhood Centre (10000m²)
- Neighbourhood Centre (4650m²)
- Service Commercial
- Commercial Mixed Use
- Mixed Office-Residential
- Industrial
- Mixed Business
- Corporate Business Park
- Major Institutional
- Institutional / Research Park
- Open Space
- Significant Natural Areas & Natural Areas
- Natural Areas Overlay
- Special Policy Area / Floodplain
- Waste Management
- Reserve Lands
- Special Study Area
- Potential School Sites

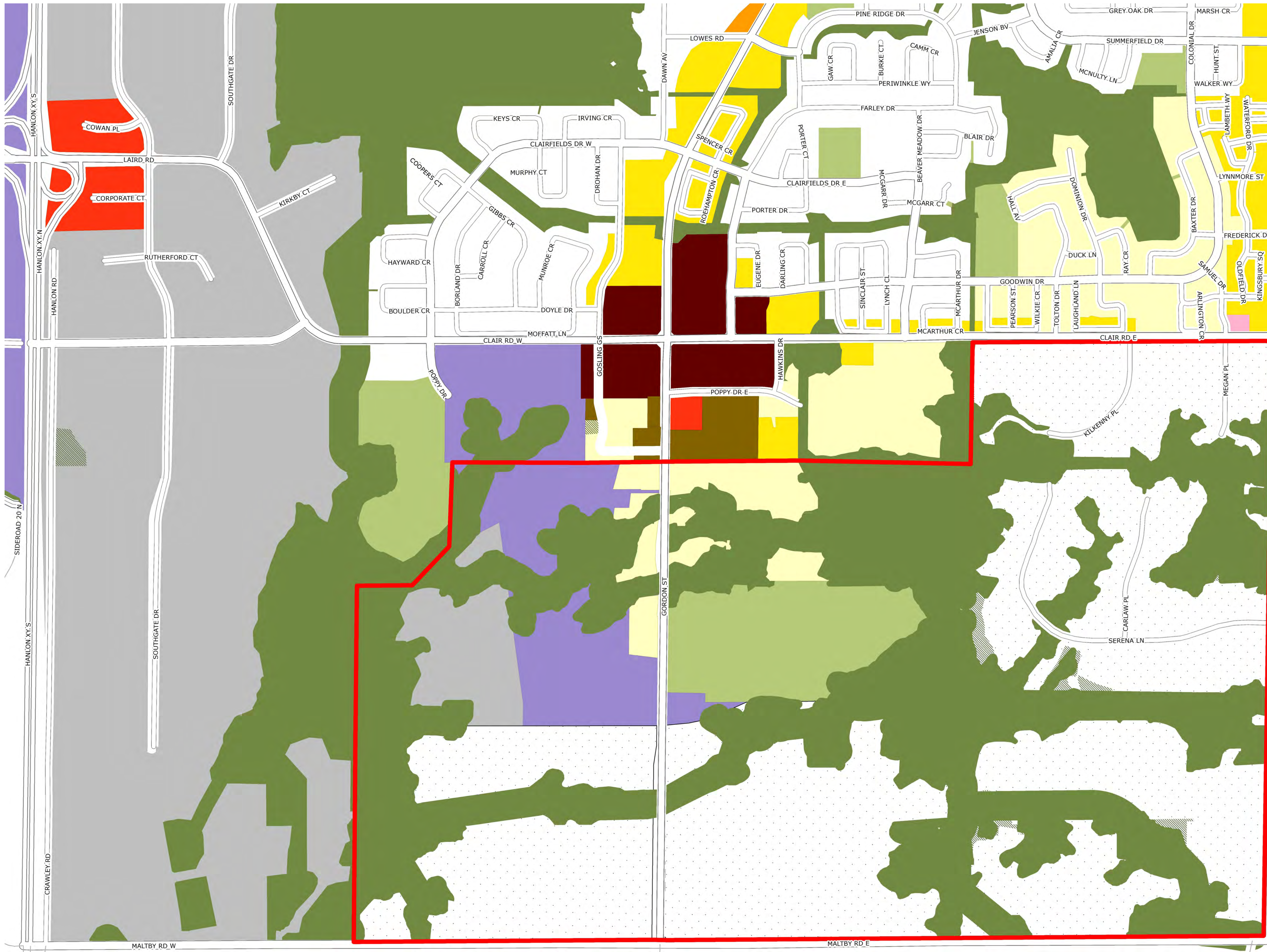


Produced by the City of Guelph
Development Planning
August 2015

OPA 48: LAND USE DESIGNATIONS



Official Plan Amendment No. 48 Clair - Maltby Secondary Plan



Legend

- City Street
- Future City Street
- County Road
- Future Highway Interchange
- Railway
- Watercourse
- Waterbody
- Corporate Boundary

Land Use Designations

- Low Density Residential
- Low Density Greenfield Residential
- Medium Density Residential
- High Density Residential
- Downtown
- Mixed-Use Corridors
- Community Mixed-Use Centre
- Service Commercial
- Neighbourhood Commercial Centre
- Mixed Office Commercial
- Industrial
- Corporate Business Park
- Mixed Business
- Institutional / Research Park
- Major Institutional
- Special Study Area
- Major Utility
- Open Space and Park
- Reserve Lands
- Secondary Planning Area
- Potential School Site

Lands Subject to Official Plan Amendment 42*

- Significant Natural Area
- Natural Area

* The Natural Heritage System, as illustrated, does not reflect the approved Natural Heritage System of the current Official Plan. Refer to the 2001 Official Plan, September 2014 Consolidation for the approved Natural Heritage System.

OPA 48 remains under appeal

