

KEY PLAN Scale: NOT TO SCALE

LEGEND

- PROP. SANITARY SEWER
- PROP. STORM SEWER
- PROP. WATERMAIN
- PROP. 1.5m SIDEWALK
- PROP. DROPCURB
- PROP. ASPHALT DRIVEWAY
- PROP. GRAVEL DRIVEWAY
- PROP. CONCRETE DRIVEWAY
- PROP. BRICK DRIVEWAY
- 100mm TOPSOIL AND SOD

THE POSITION OF POLES, LINES, CONDUITS, WATERMANS, SEWERS AND OTHER UNDERGROUND UTILITIES AND STRUCTURES IS NOT NECESSARILY SHOWN ON THE CONTRACT DRAWINGS, AND WHERE SHOWN, THE ACCURACY OF THE POSITION OF SUCH UTILITIES AND STRUCTURES IS NOT GUARANTEED. BEFORE STARTING WORK, THE CONTRACTOR SHALL INFORM HIMSELF OF THE EXACT LOCATION OF ALL SUCH UTILITIES AND STRUCTURES, AND SHALL ASSUME ALL LIABILITY FOR DAMAGE TO THEM.

No.	DATE	DESCRIPTION	BY:	CHKD.
5	May/13	ADDENDUM #1	WOB	CAJ
4	May/13	MOE SUBMISSION	MOE	BH
3	Apr/13	ISSUED FOR TENDER	WOB	BH
2	Mar/13	90% DESIGN SUBMISSION	WOB	BH
1	JAN/13	60% DESIGN SUBMISSION	WOB	BH

ISSUES/REVISIONS

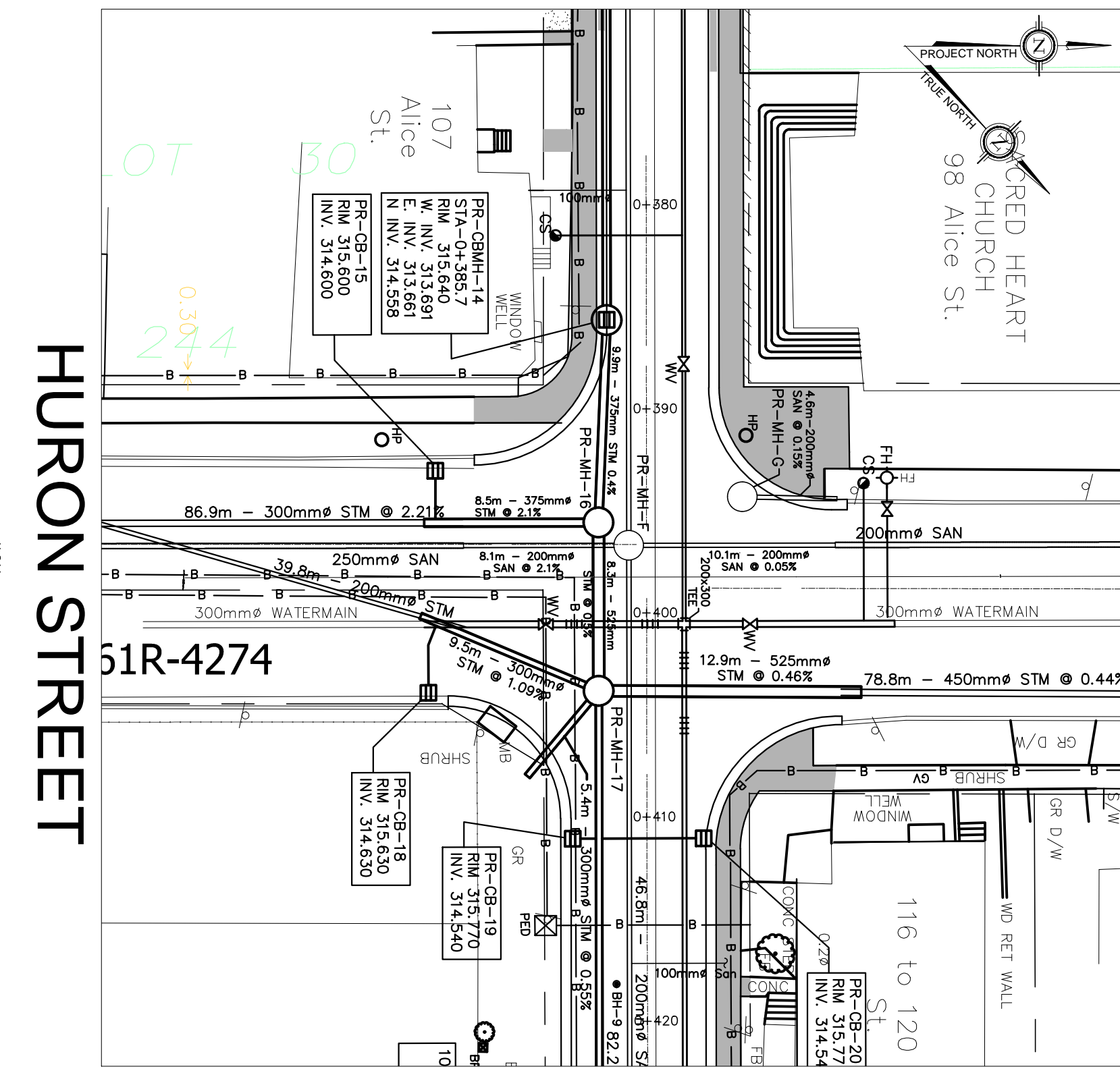


ENGINEERING SERVICES

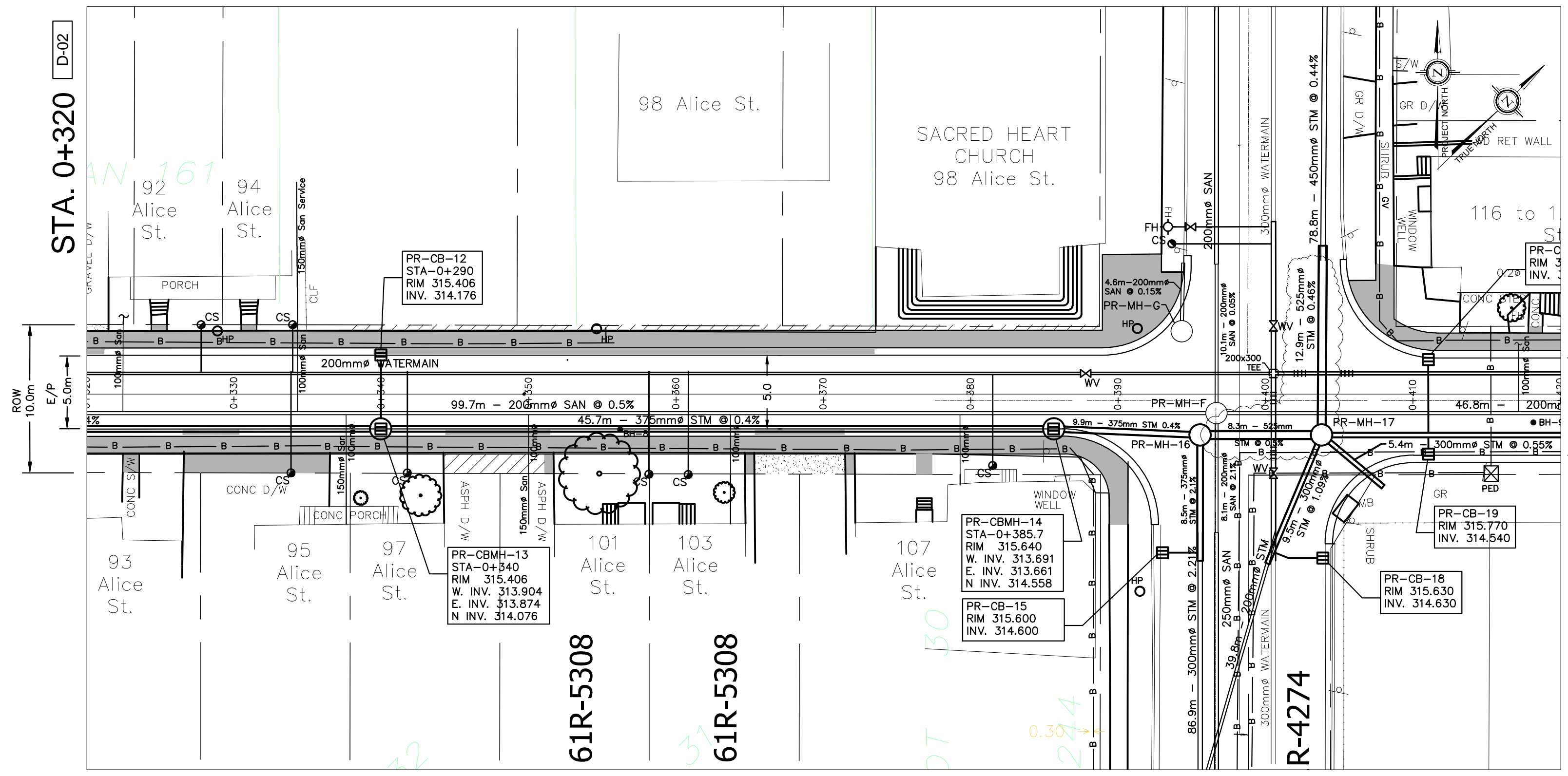
ALICE STREET
RECONSTRUCTION
ARTHUR TO SACKVILLE
City of Guelph

RECONSTRUCTION
0+320 TO 0+420

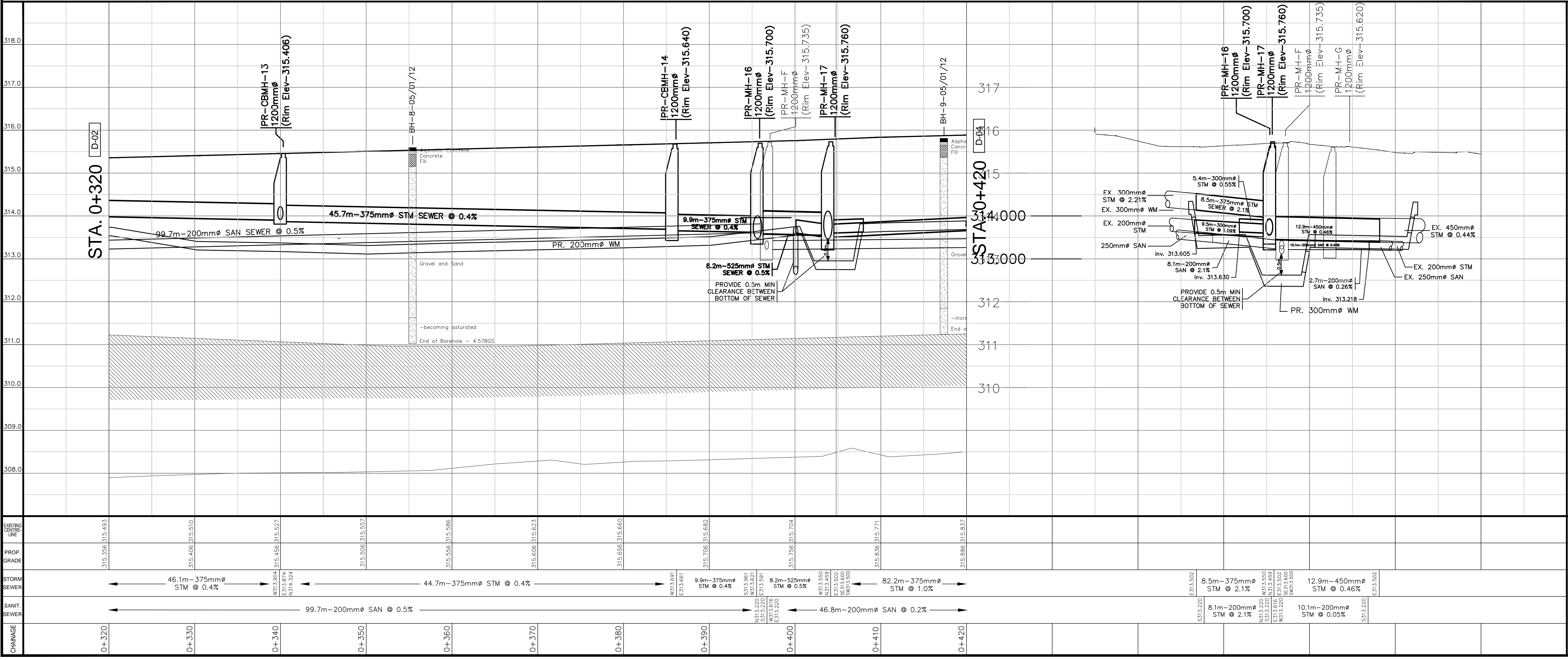
EXISTING CENTRELINE	SCALE: HOR: 1:250 VER: 1:50
PROPOSED GRADE	DATE DRAWN: JANUARY 2013
STORM SEWER	DRAWN BY: WOB CHECKED BY: BH
SANITARY SEWER	CONSULTANT DRAWING No.
CHAINAGE	CITY CONTRACT No. 2-1307
	CITY REFERENCE No. D-11 REV. 5



ALICE STREET



HURON STREET



CHANGE	CHAINAGE	EXISTING CENTRELINE	PROPOSED GRADE	STORM SEWER	SANITARY SEWER
	0+320	315.356	315.493	46.1m-375mm STM @ 0.4%	99.7m-200mm SAN @ 0.5%
	0+330	315.406	315.510		
	0+340	315.456	315.527		
	0+350	315.506	315.557		
	0+360	315.556	315.566		
	0+370	315.606	315.623		
	0+380	315.656	315.660		
	0+390	315.706	315.682	9.9m-375mm STM @ 0.4%	
	0+400	315.756	315.704	8.2m-525mm STM @ 0.5%	
	0+410	315.806	315.771		
	0+420	315.856	315.817	82.2m-375mm STM @ 1.0%	46.8m-200mm SAN @ 0.2%