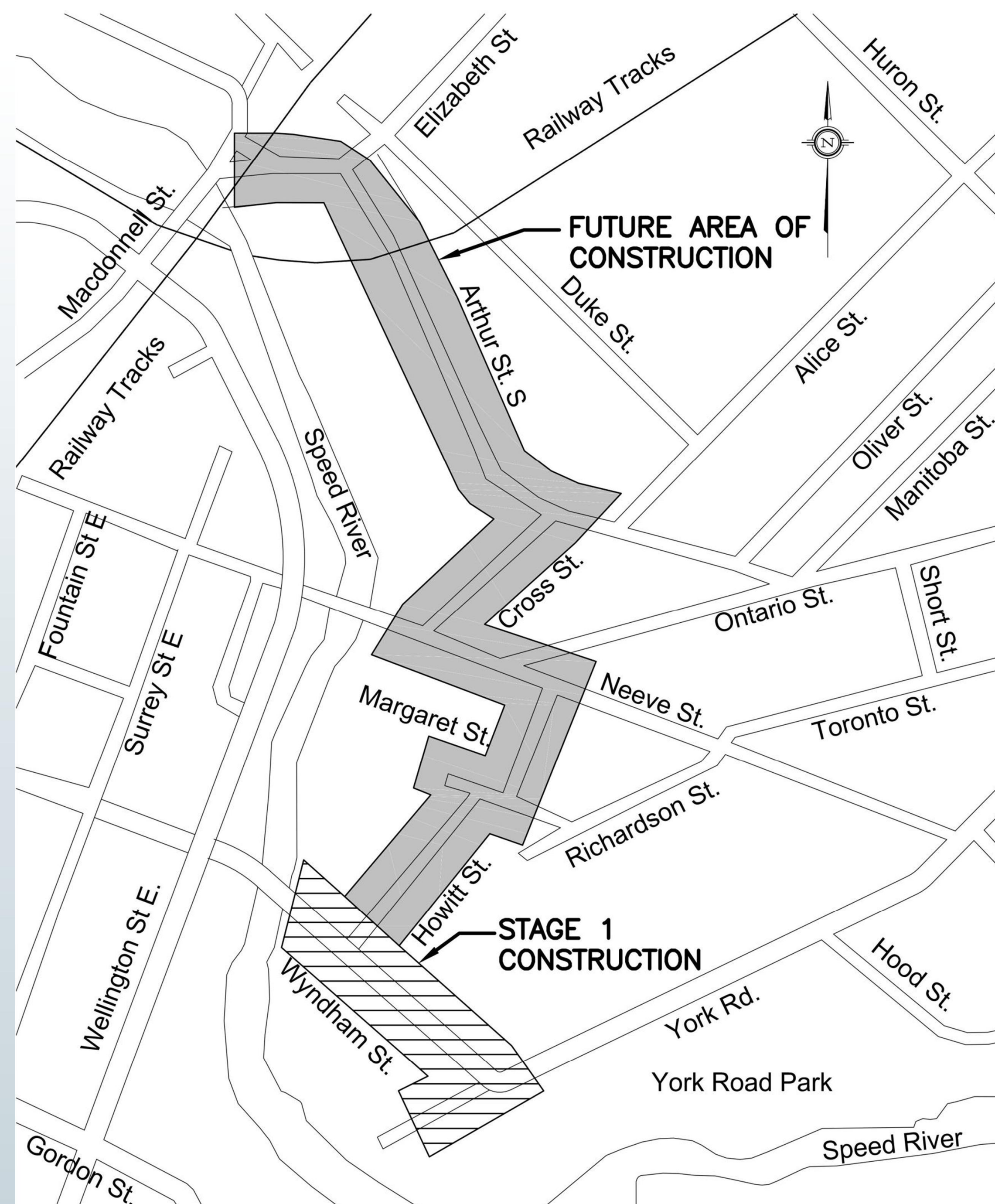


OPEN HOUSE: ARTHUR STREET SANITARY TRUNK SEWER AND ROAD RECONSTRUCTION

STAGE 1: WYNDHAM STREET FROM YORK ROAD TO THE BRIDGE AT THE SPEED RIVER

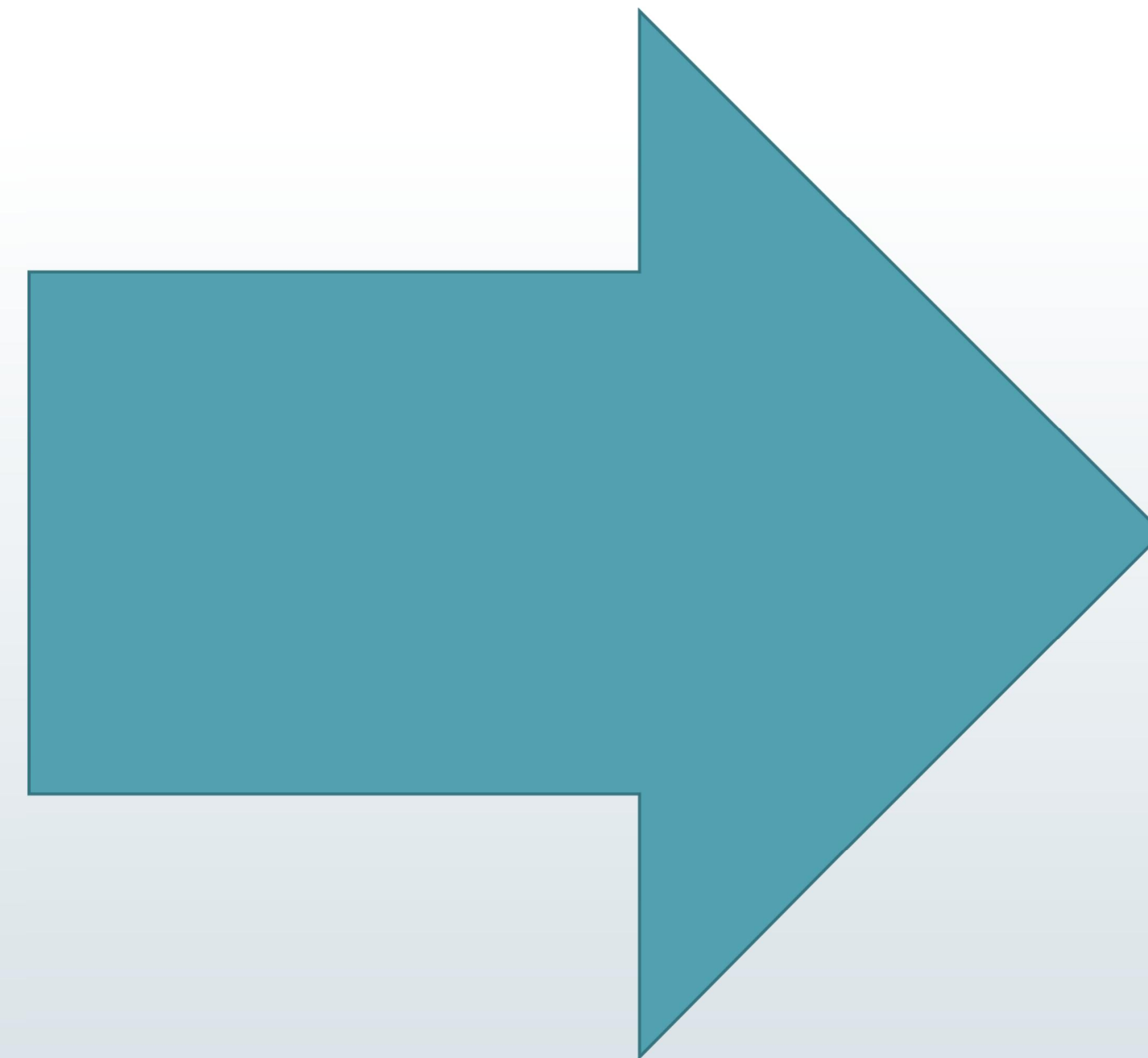
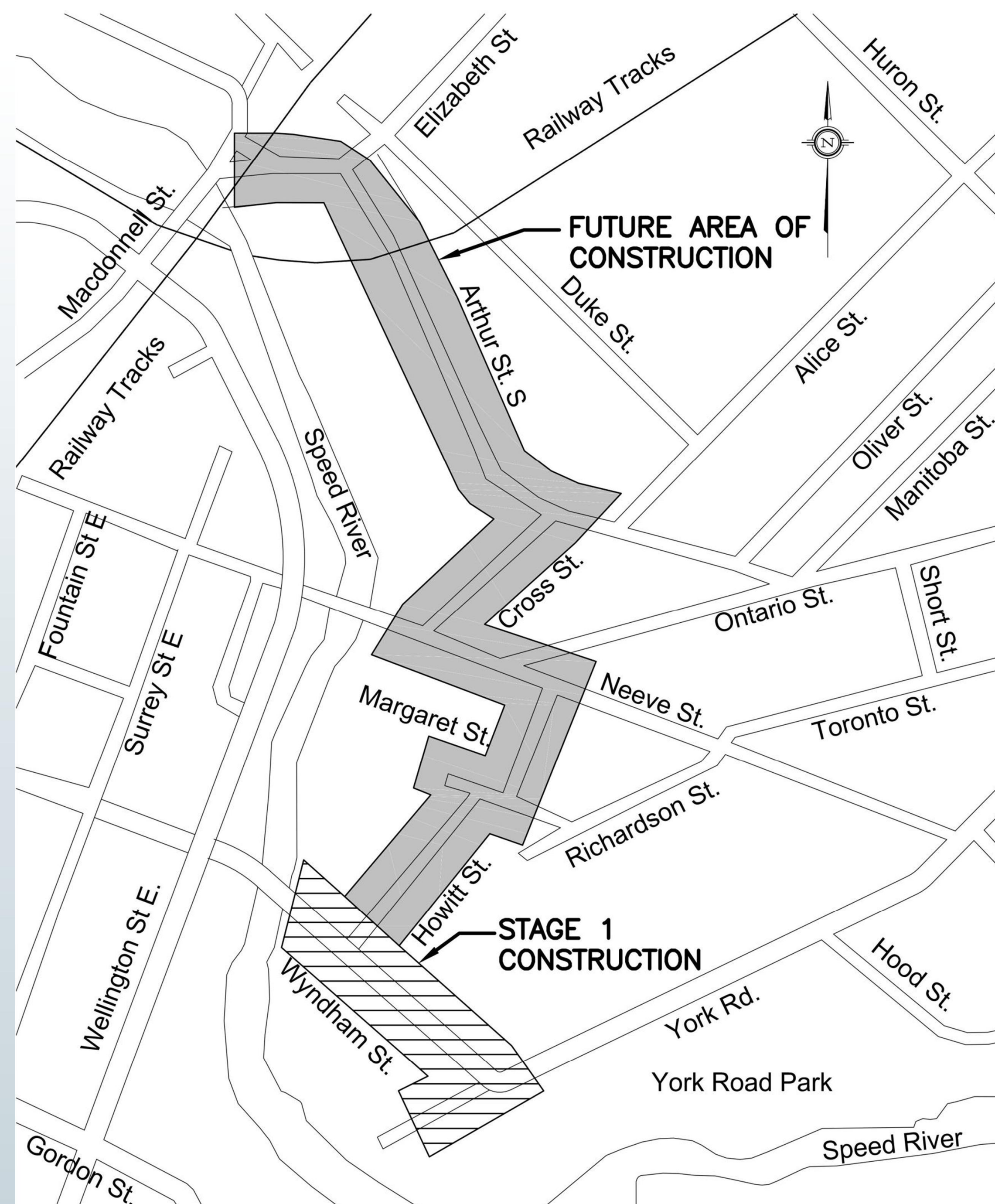


Thursday, May 21, 2015
5:00 to 7:00 p.m.
River of Life International Fellowship
40 Margaret Street



OPEN HOUSE: ARTHUR STREET SANITARY TRUNK SEWER AND ROAD RECONSTRUCTION

STAGE 1: WYNDHAM STREET FROM YORK ROAD TO THE BRIDGE AT THE SPEED RIVER



Thursday, May 21, 2015
5:00 to 7:00 p.m.
River of Life International Fellowship
40 Margaret Street



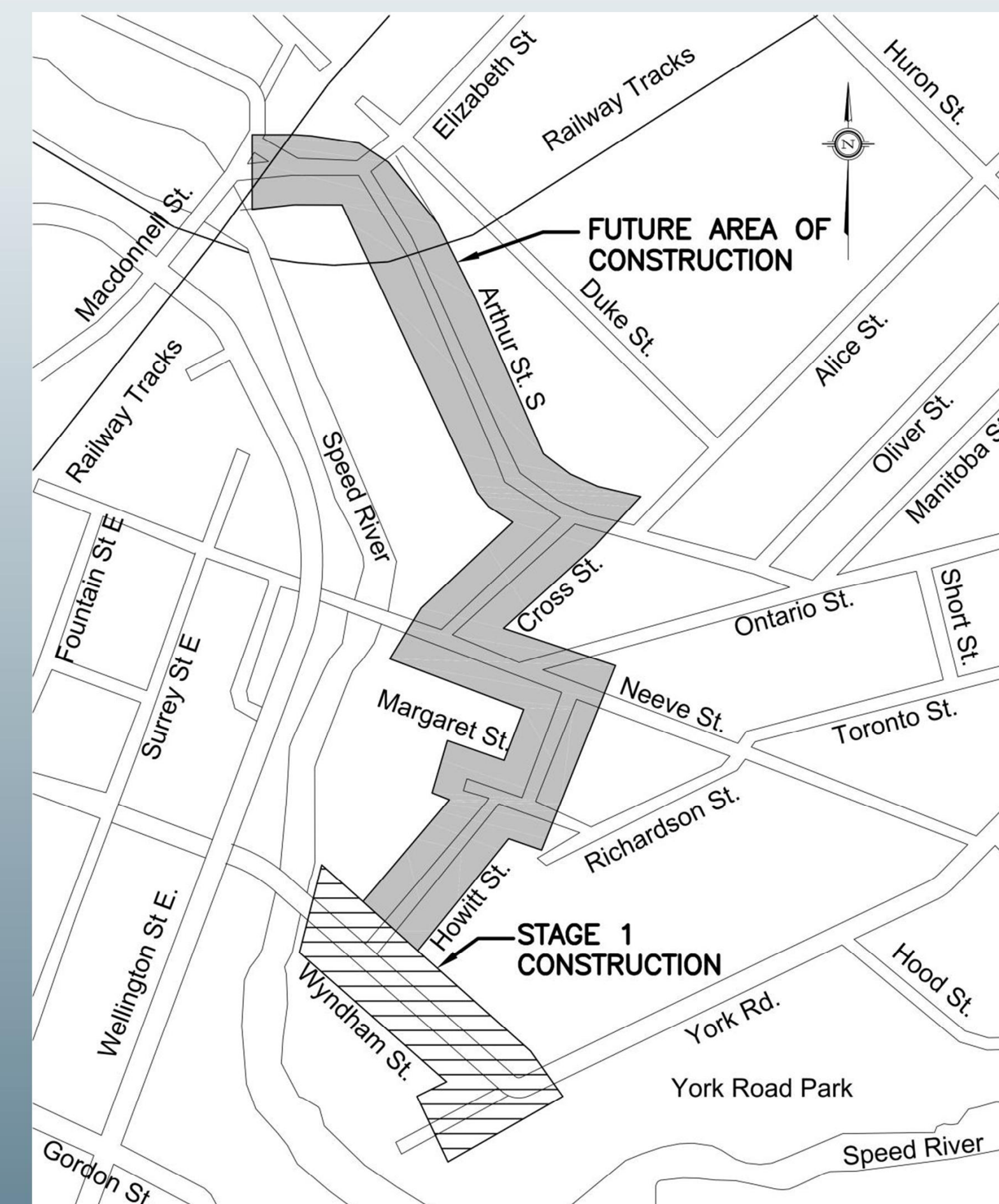
WELCOME



OPEN HOUSE: ARTHUR STREET SANITARY TRUNK SEWER AND ROAD RECONSTRUCTION

STAGE 1: WYNDHAM STREET FROM YORK ROAD TO THE BRIDGE AT THE SPEED RIVER

Public Information Centre
City of Guelph
May 21, 2015

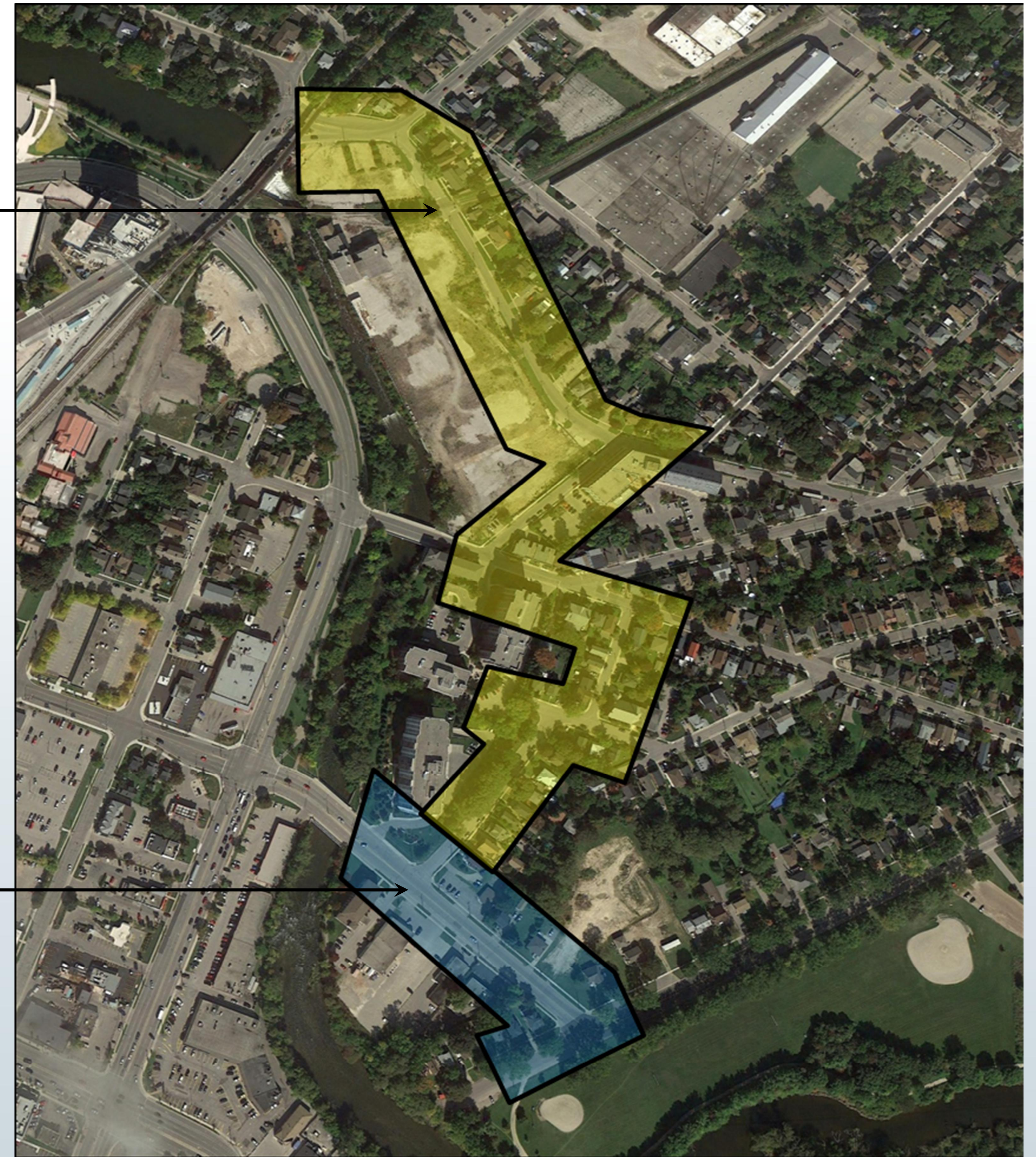
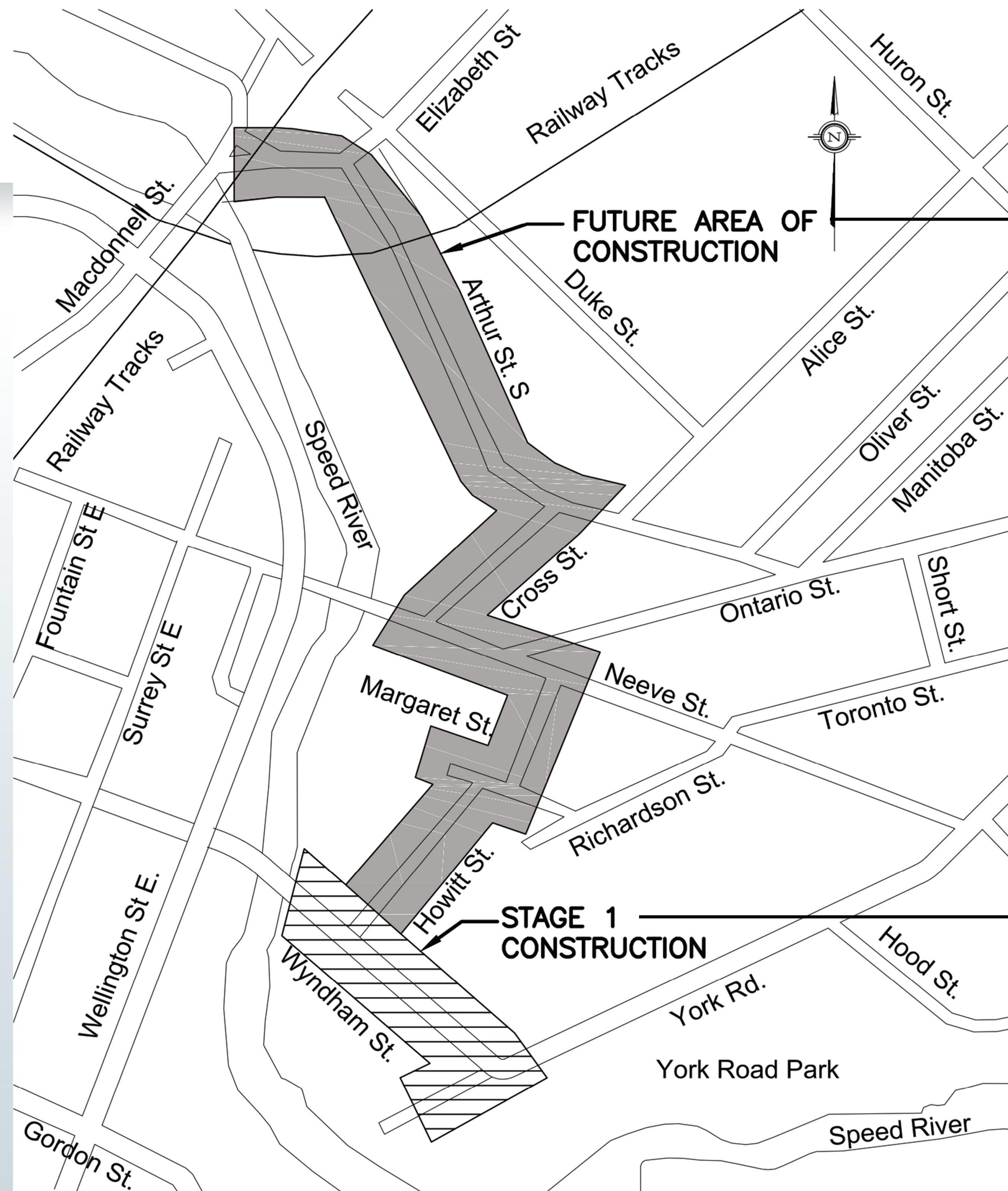


Purpose of Public Information Centre

- Meet requirements of the EA process
- Communicate purpose of project
 - Reconstruct infrastructure
 - Re-align trunk sanitary sewer
- Review design and seek public input
- Communicate scope and limits of construction
- Identify potential construction or access issues ahead of construction



Project Area



Project Background

- City identified a need to upgrade/re-align the Arthur Trunk Sanitary Sewer
- Local infrastructure is at end of life and requires replacement
- Completed EA was filed in February 2014 detailing route of trunk sewer re-alignment
- Dillon was awarded contract for detailed design of trunk sewer and infrastructure in Fall 2014.
- Construction expected to start in 2015 (Stage 1) with future stages to follow



Staging

- Stage 1: Wyndham Street from York Road to the bridge at the Speed River
 - Summer/Fall 2015
 - See staging drawing for Wyndham Street for further staging details
- Future Stages – other project streets in one or more tenders



Next Steps

- Stage 1
 - Detailed design to be completed
 - *Incorporate results from geotechnical investigation and arborist report*
 - City to tender construction
 - Prior to construction, notice will be delivered to residents
- Future Stages
 - Detailed design to be completed (as above)
 - City to tender construction based on commitments, budget availability, and utility relocations
 - Additional Open House(s) prior to construction



Comments / Feedback

- Please fill out a comment form should you have feedback for the project team
- Feedback form can be left in the box provided or sent by email to the contacts noted below
- Thank you for attending our Open House



Ike Umar, C.E.T.
Project Manager
City of Guelph
519-822-1260 extension 2242
ike.umar@guelph.ca

guelph.ca/construction

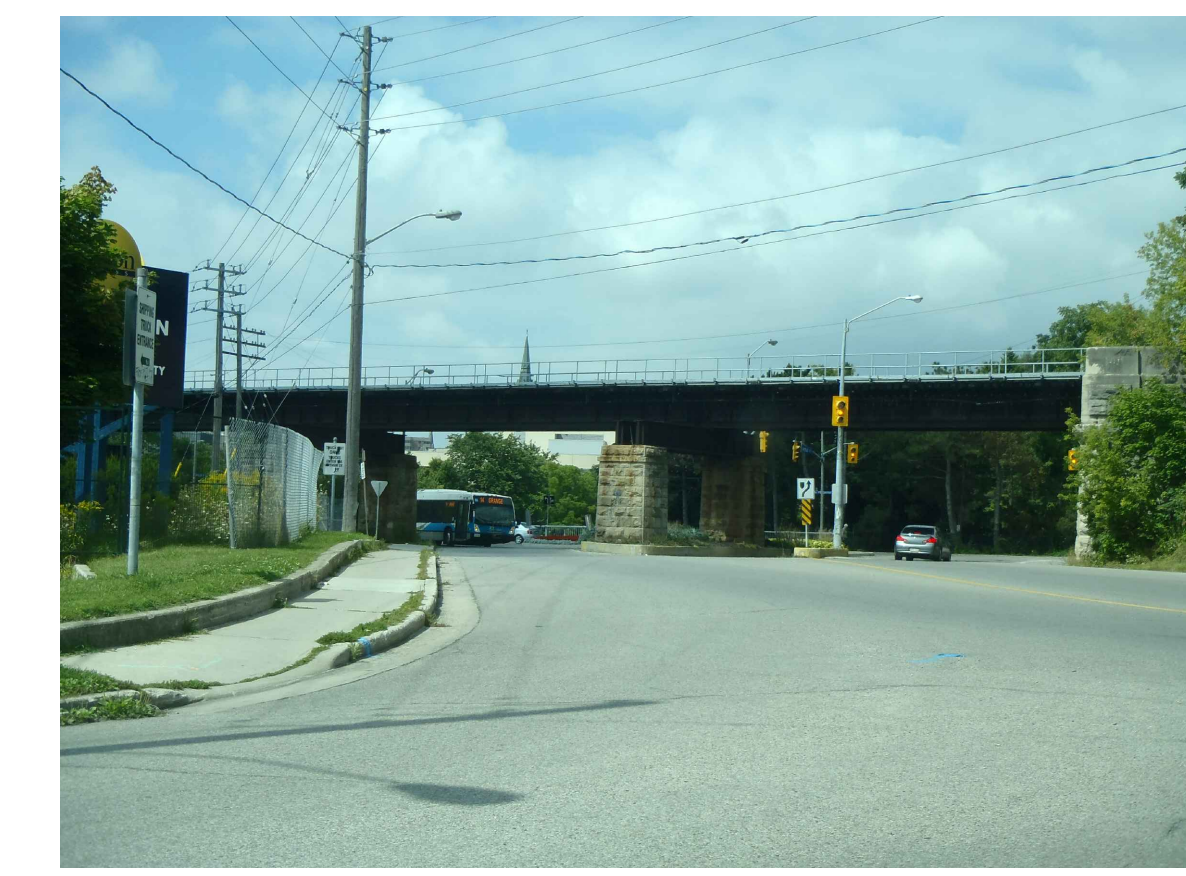
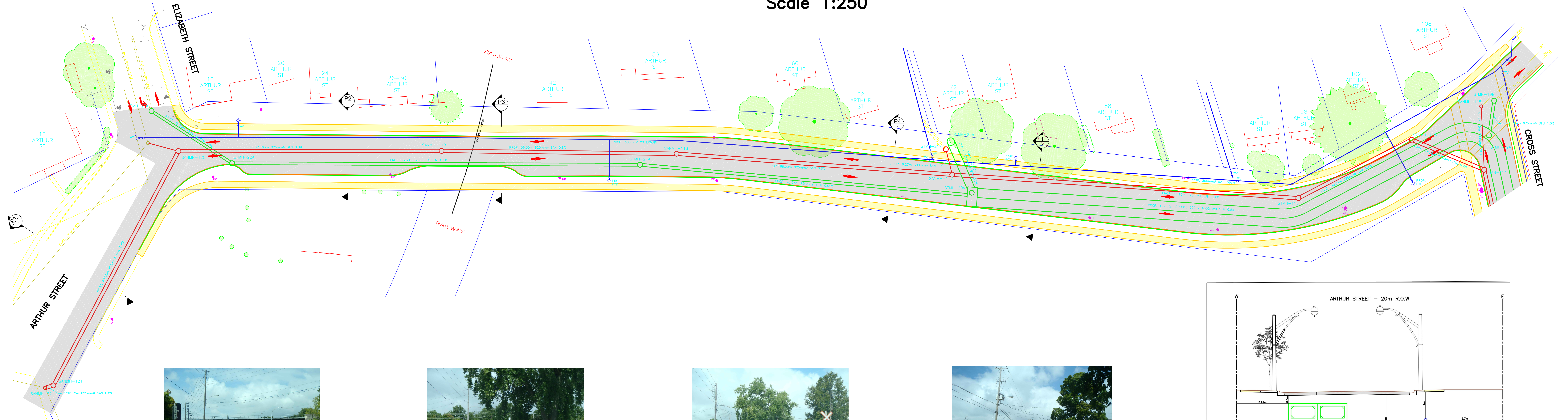
Denis Viens, Ph.D., P.Eng., LEED AP
Associate
Dillon Consulting Limited
519-571-9833 extension 3109
dviens@dillon.ca



Arthur Street Reconstruction – Future Construction

Elizabeth Street to Cross Street

Scale 1:250



P1 PHOTO



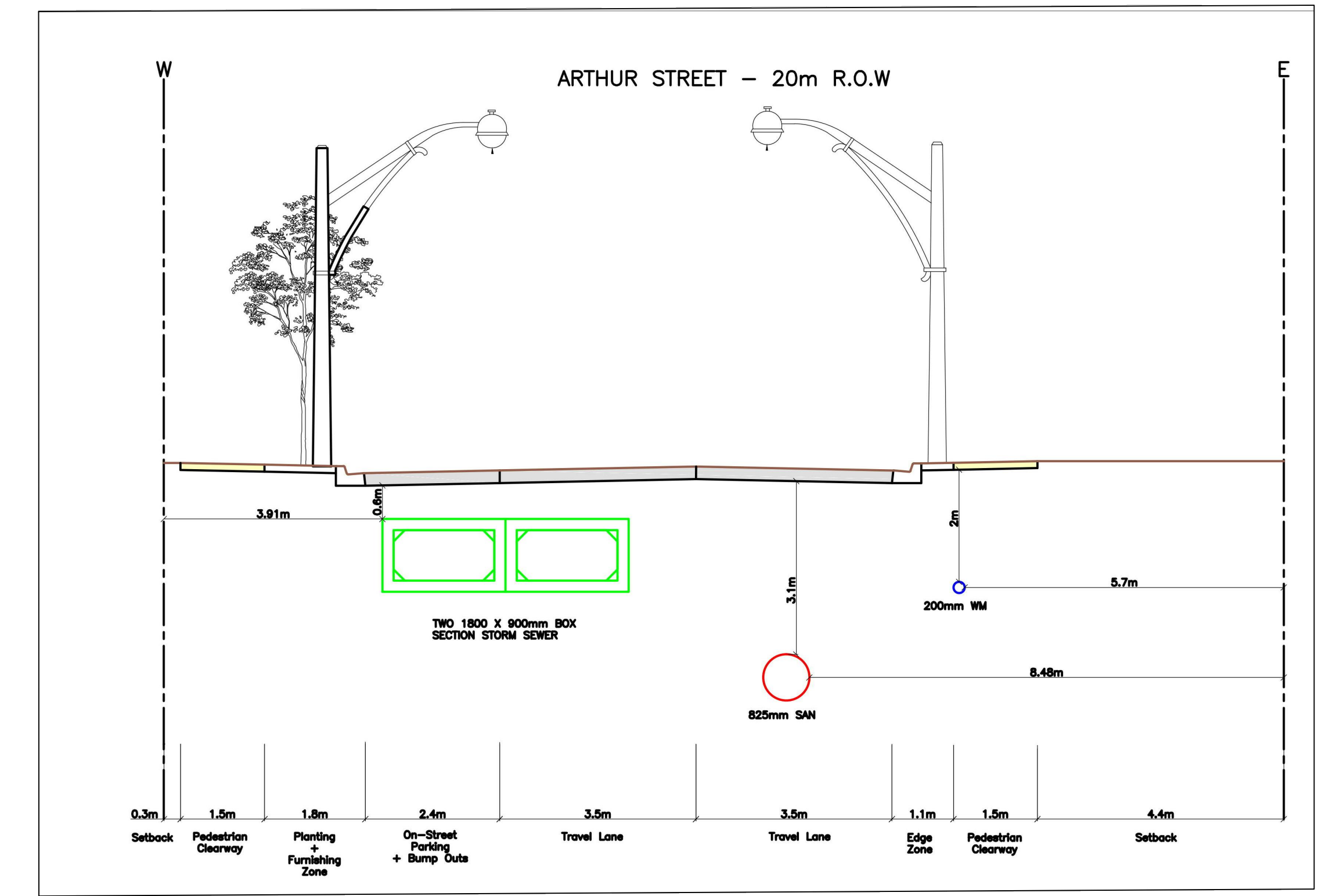
P2 PHOTO



P3 PHOTO



P4 PHOTO

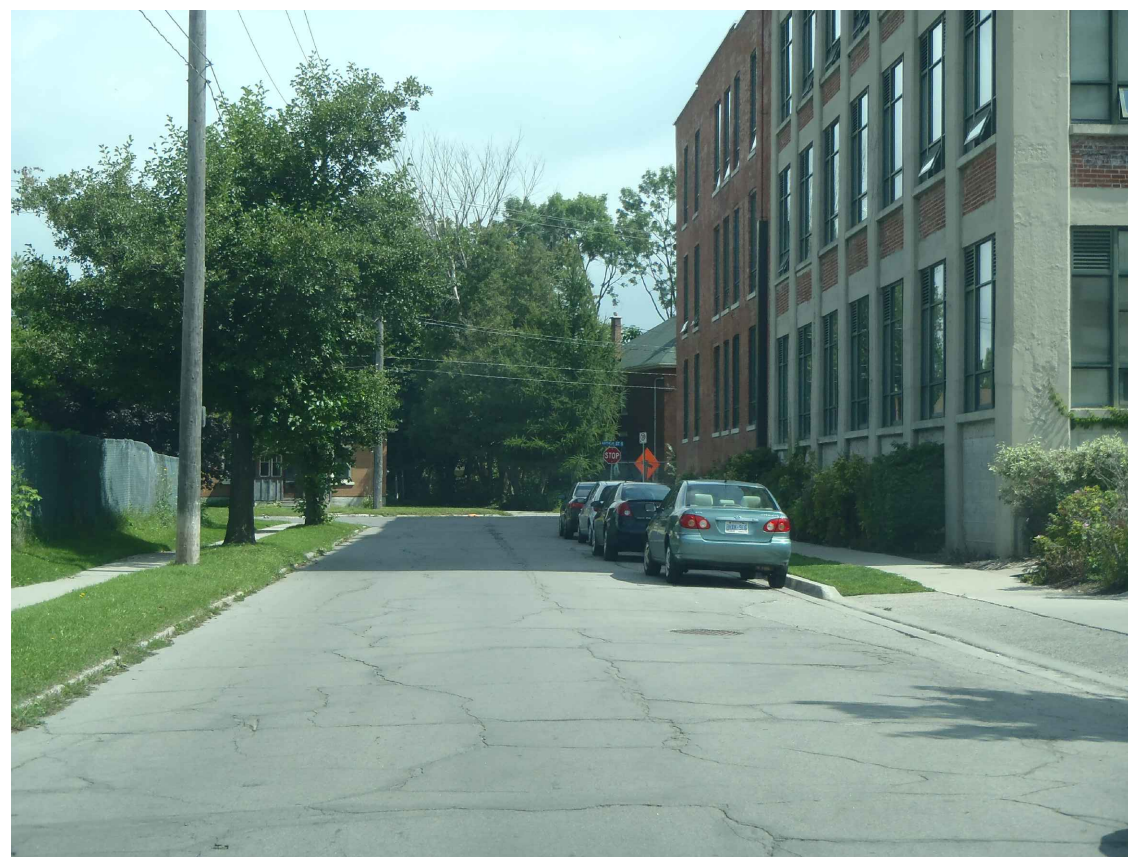
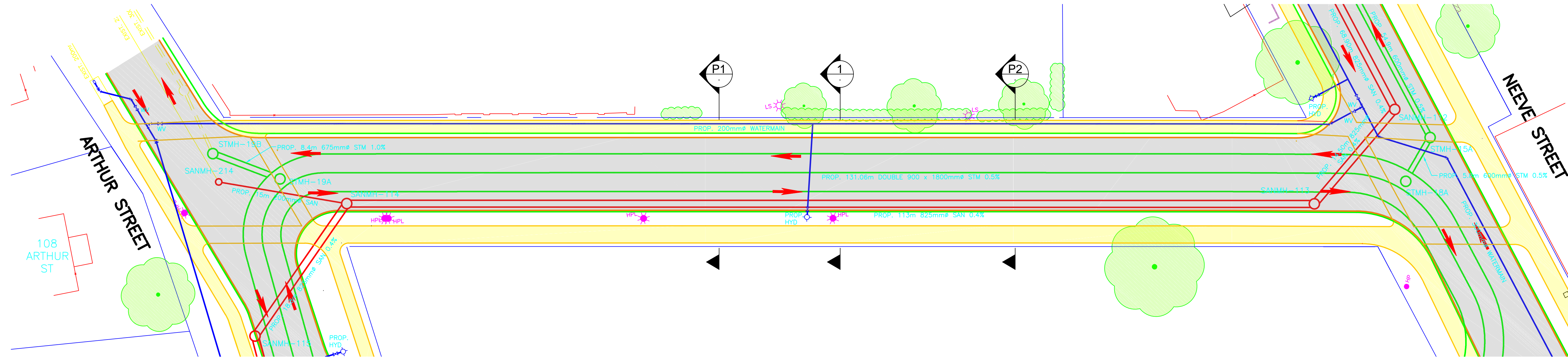
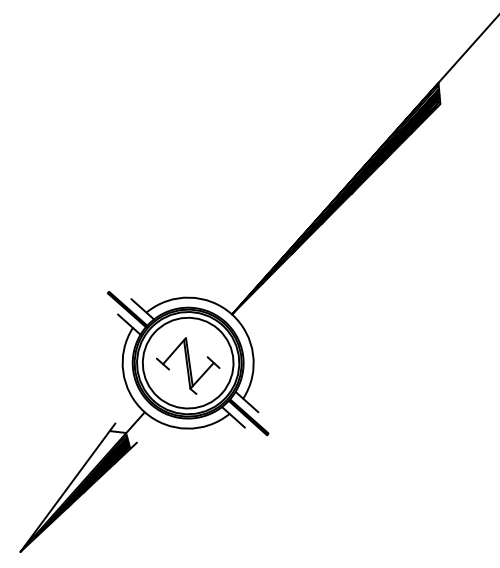


1 TYPICAL CROSS SECTION
 NTS

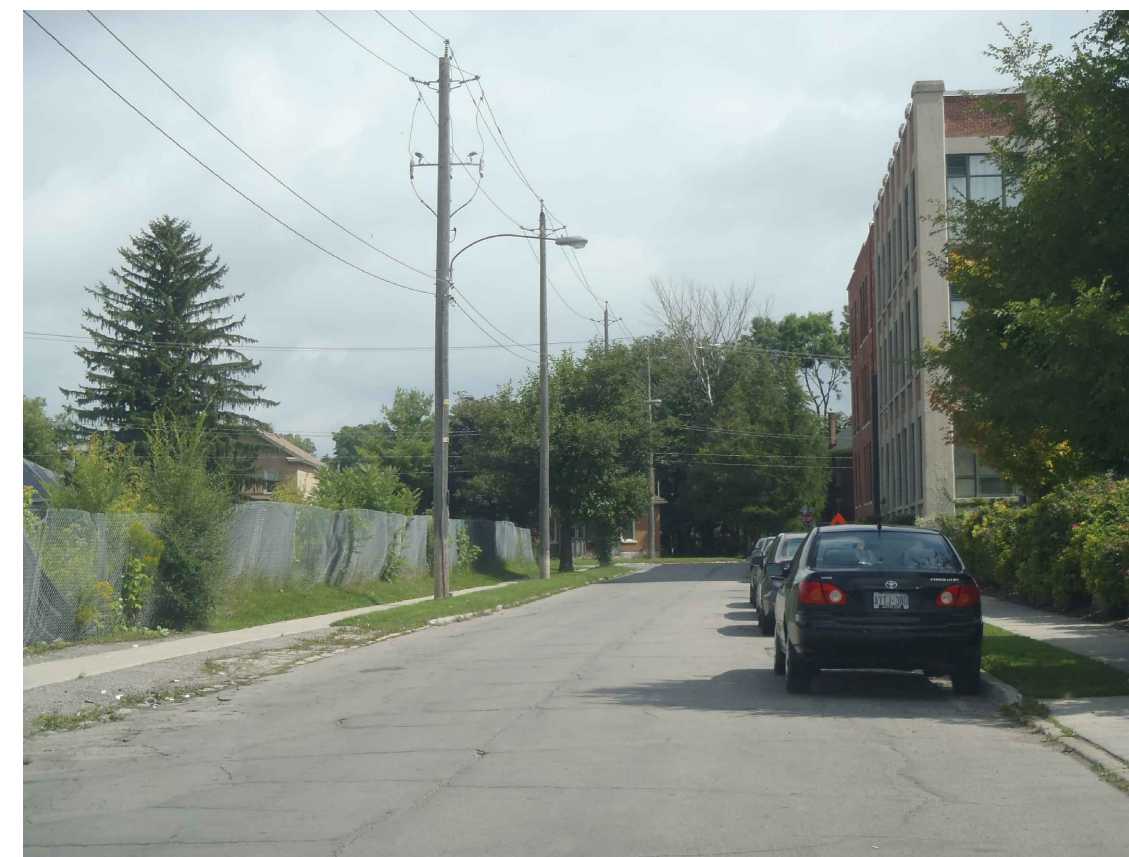
Cross Street Reconstruction – Future Construction

Arthur Street to Neeve Street

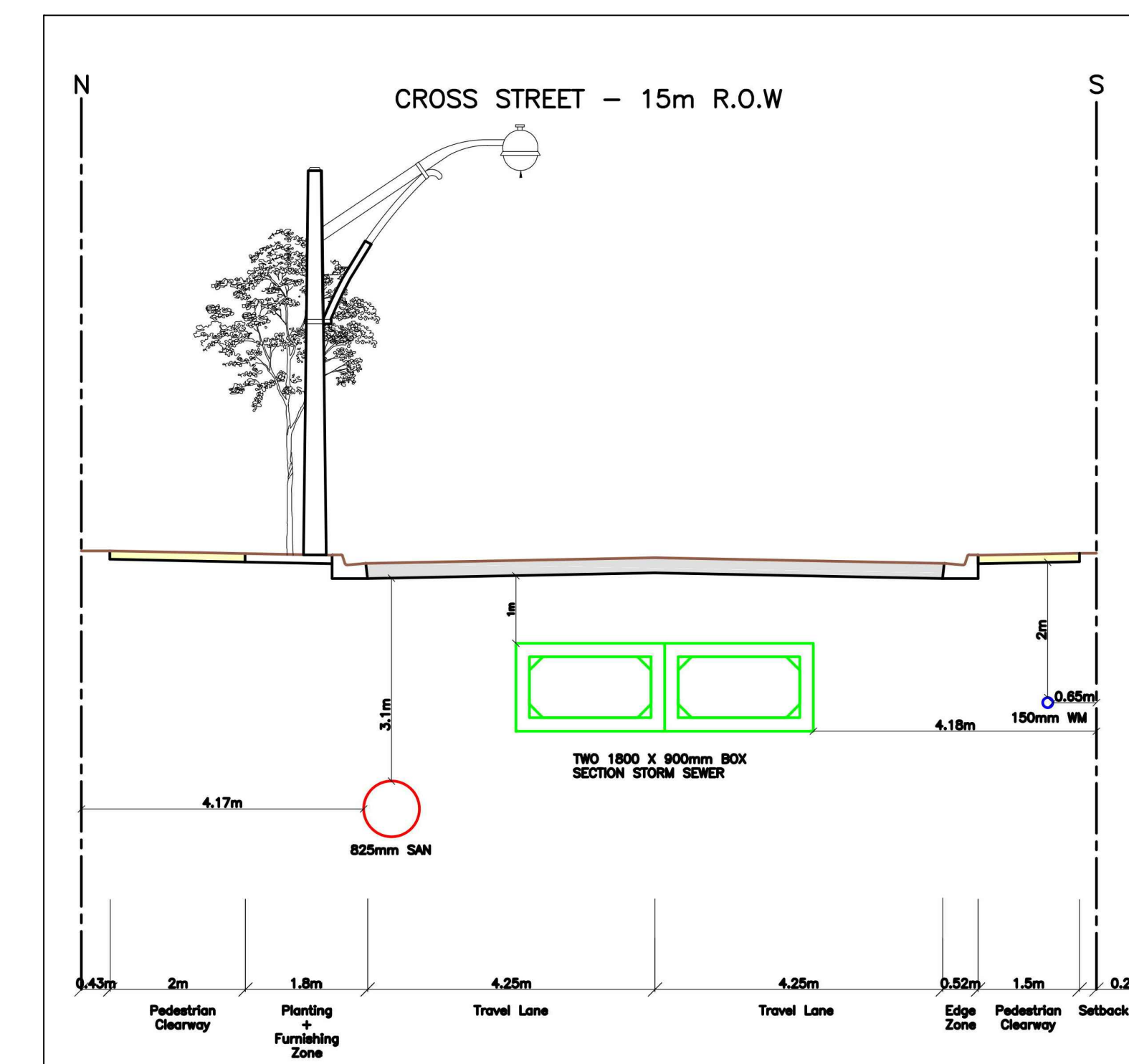
Scale 1:250



P1 PHOTO



P2 PHOTO

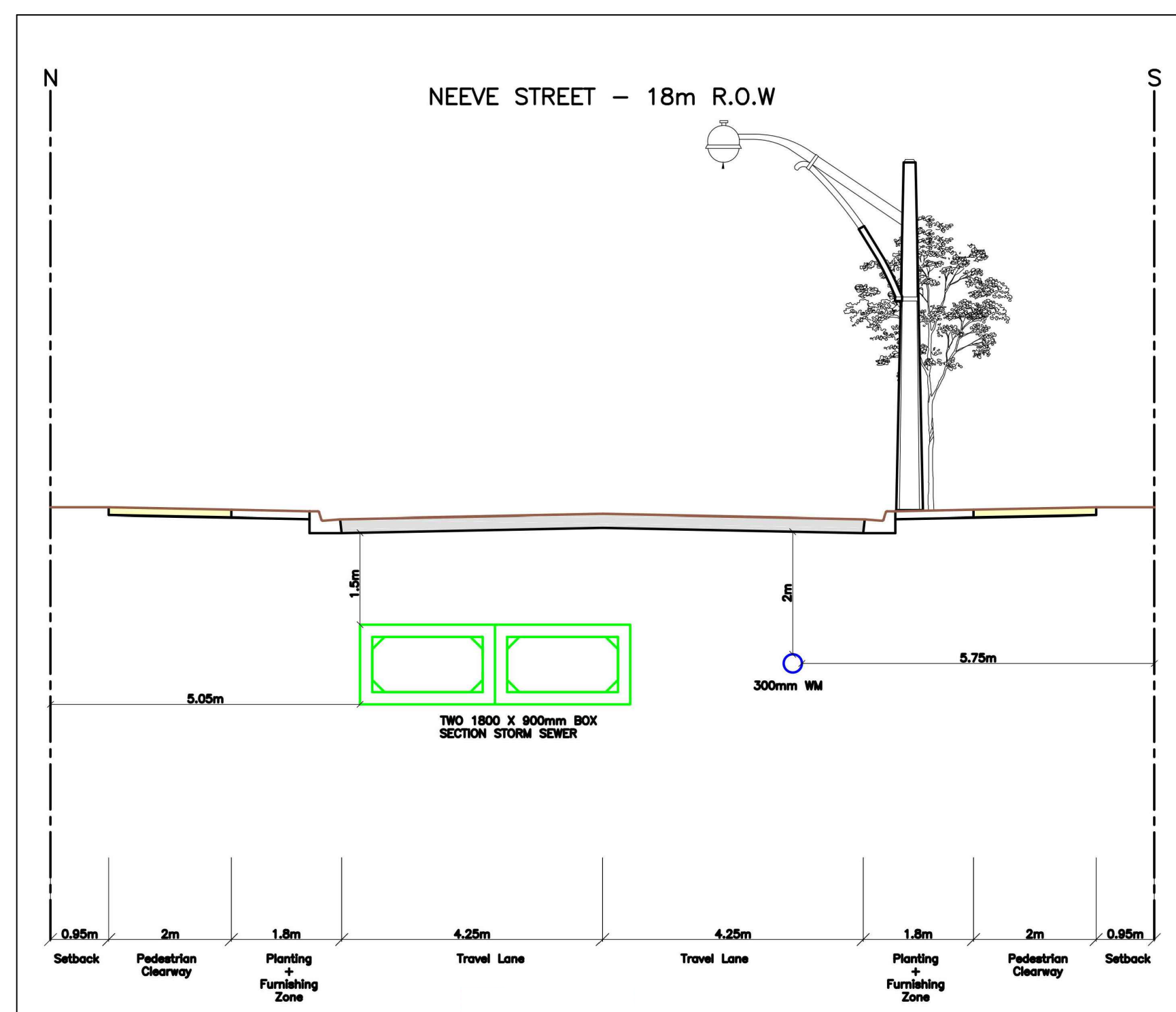
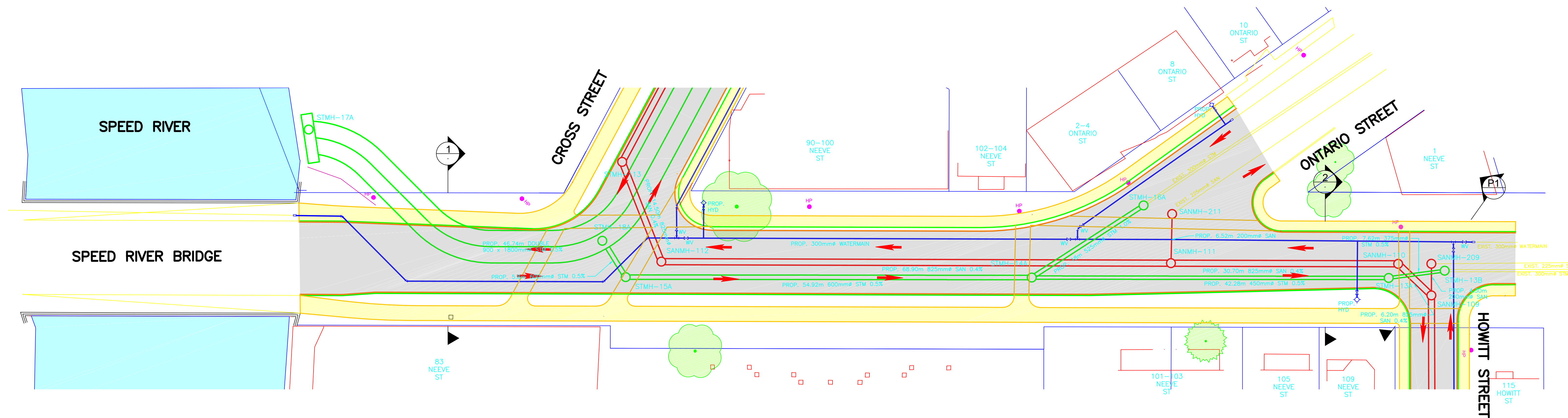
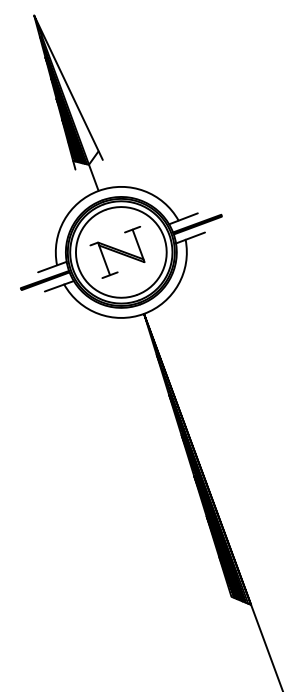


1 TYPICAL CROSS SECTION
NTS

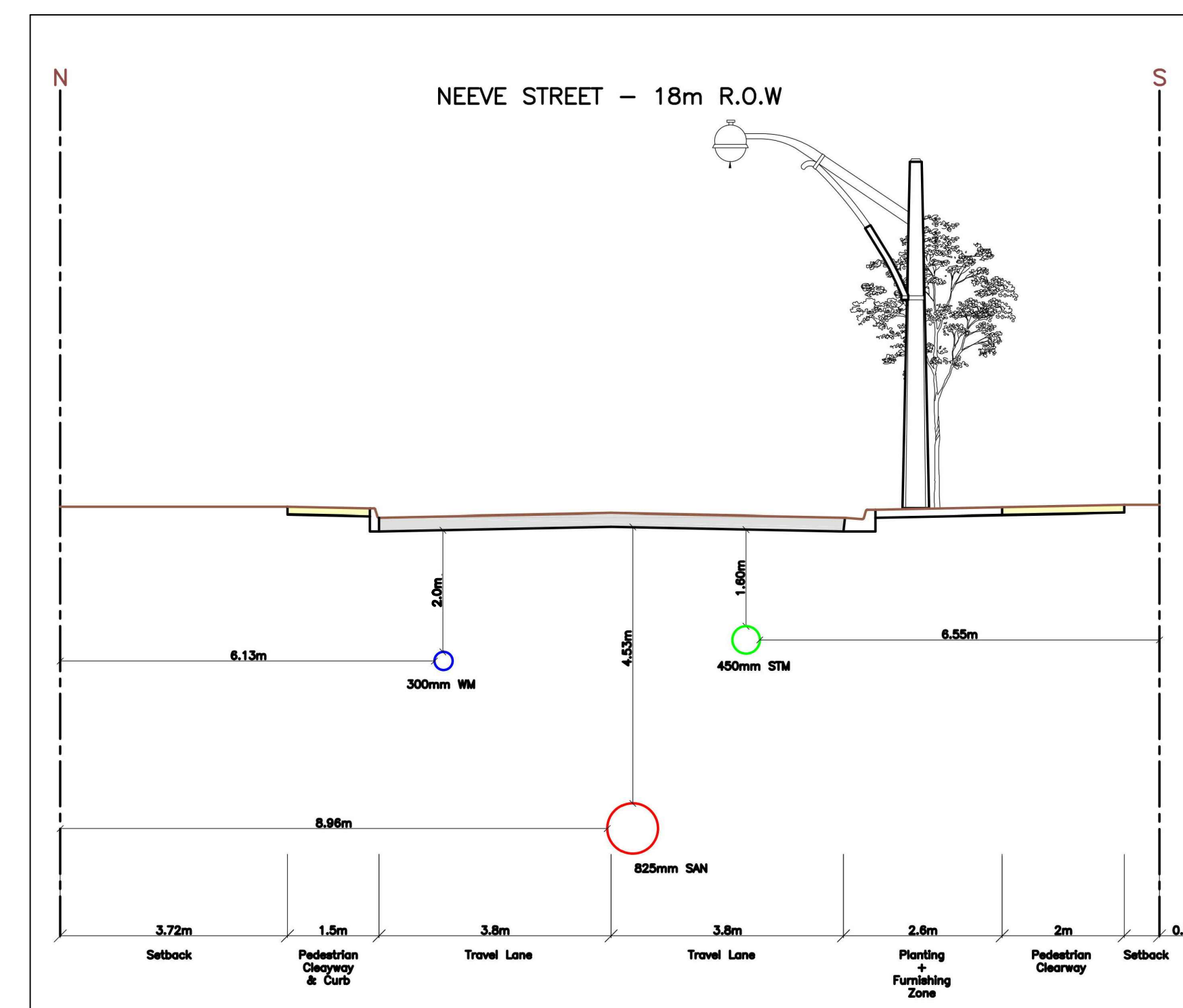
Neeve Street Reconstruction – Future Construction

Speed River to Howitt Street

Scale 1:250



1 TYPICAL CROSS SECTION
NTS



2 TYPICAL CROSS SECTION
NTS

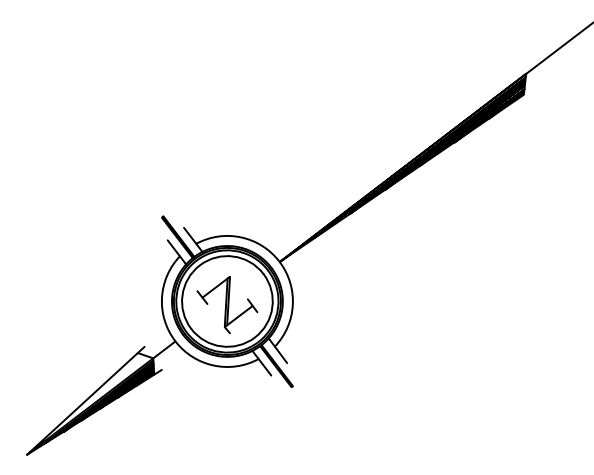


P1 PHOTO

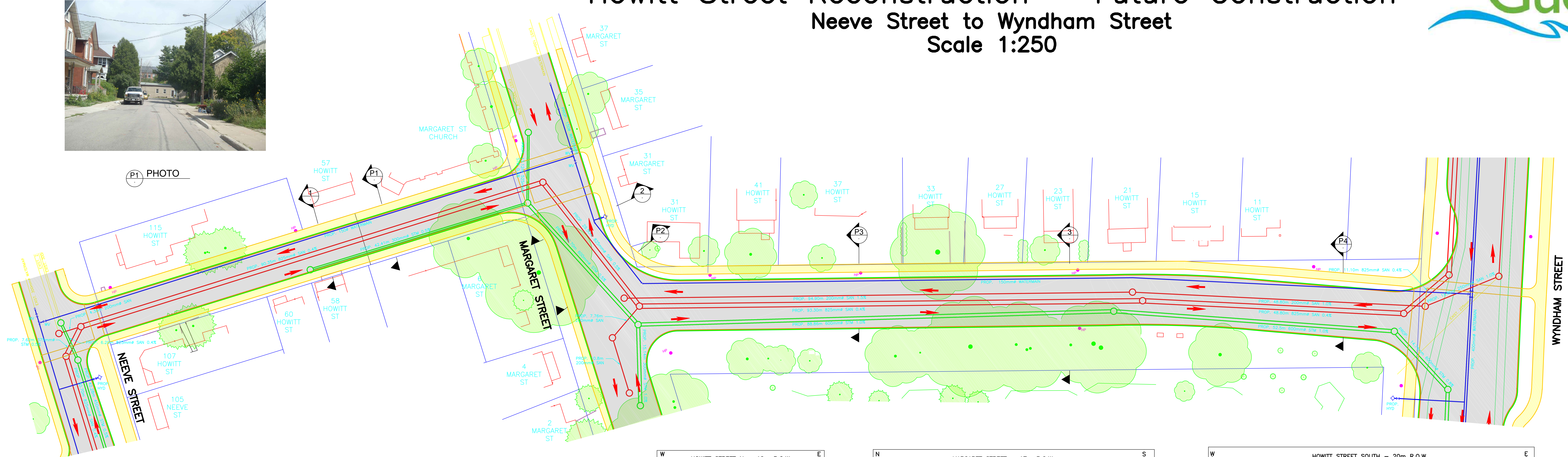
Howitt Street Reconstruction – Future Construction

Neeve Street to Wyndham Street

Scale 1:250



P1 PHOTO



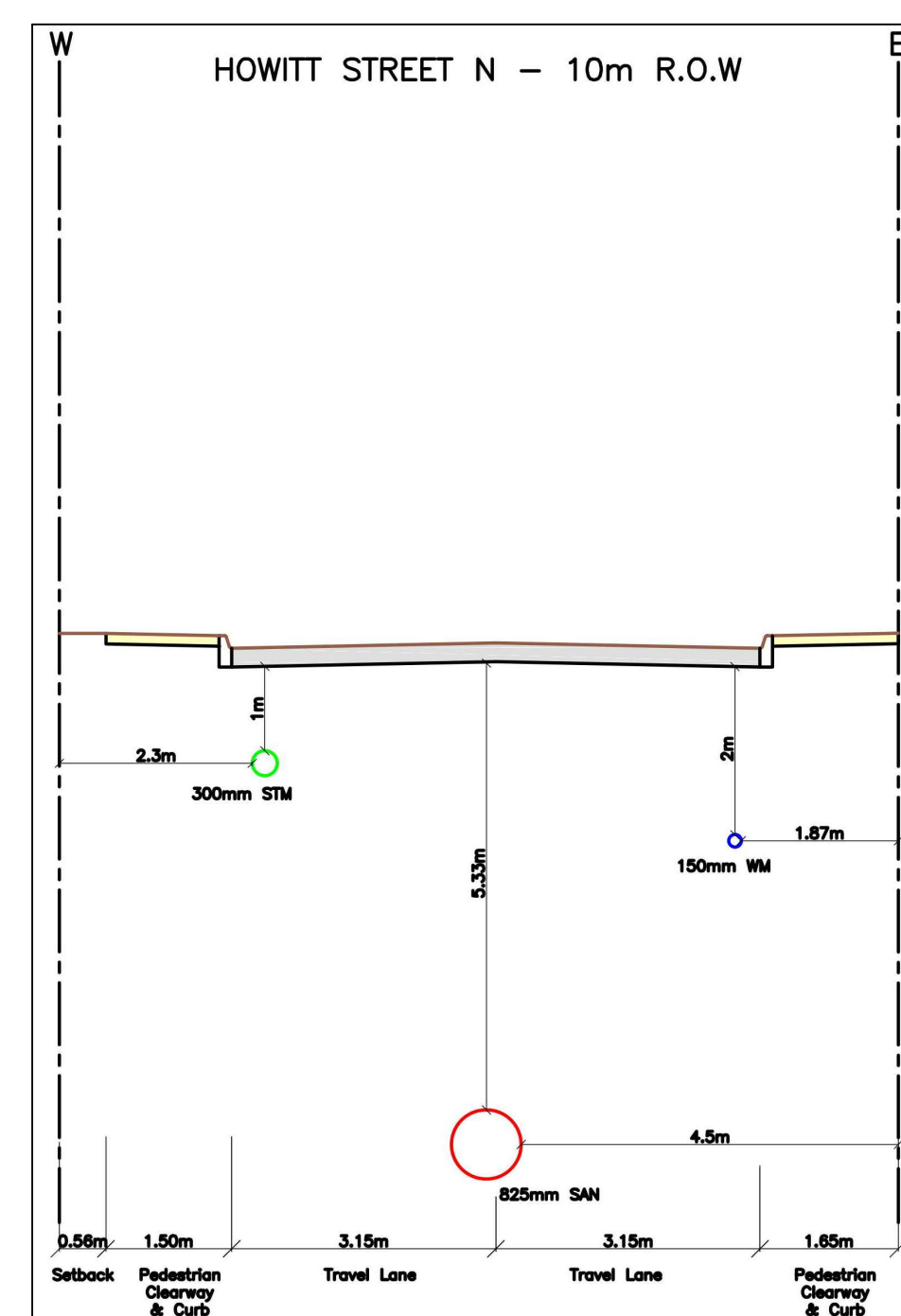
P2 PHOTO



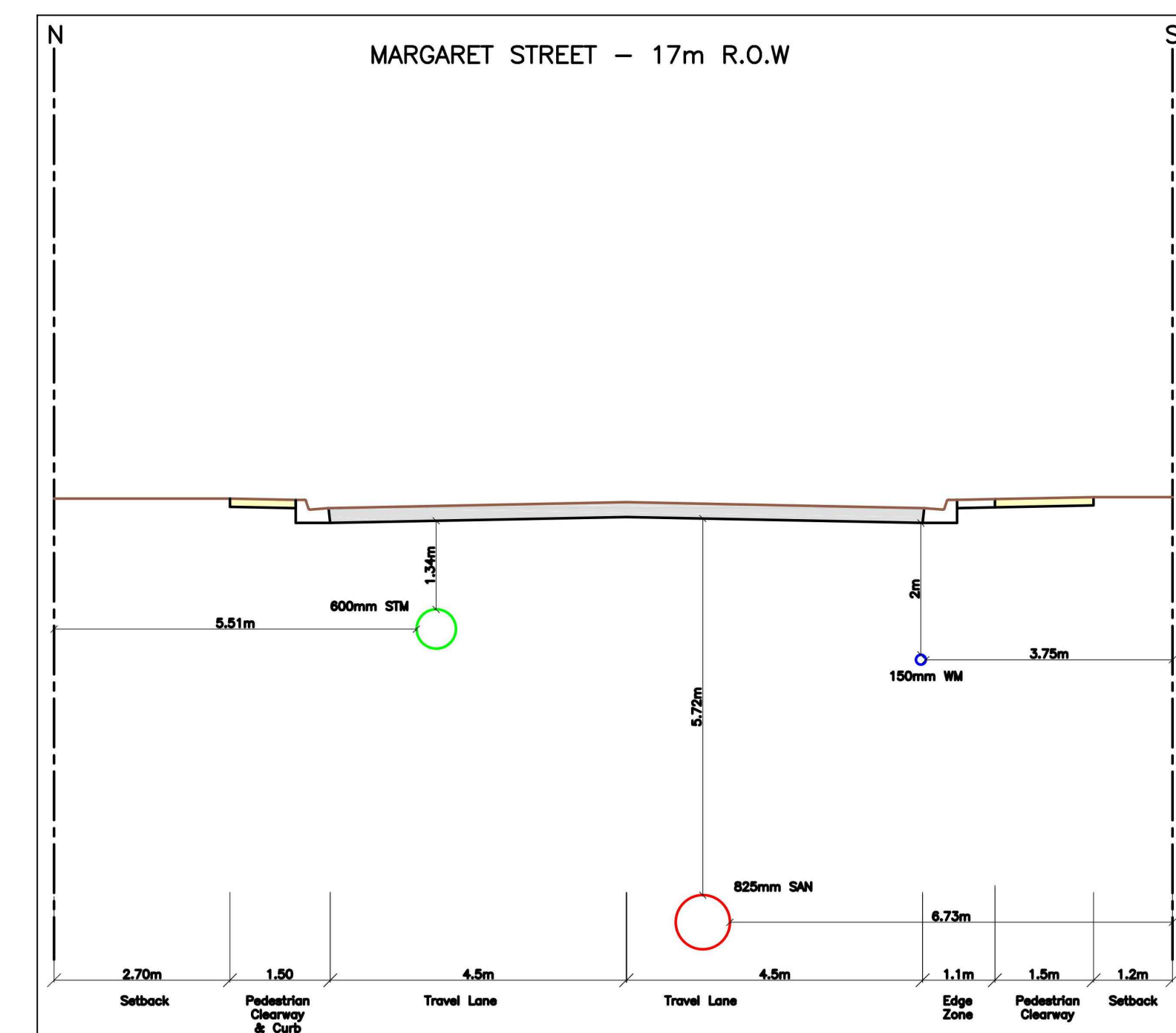
P3 PHOTO



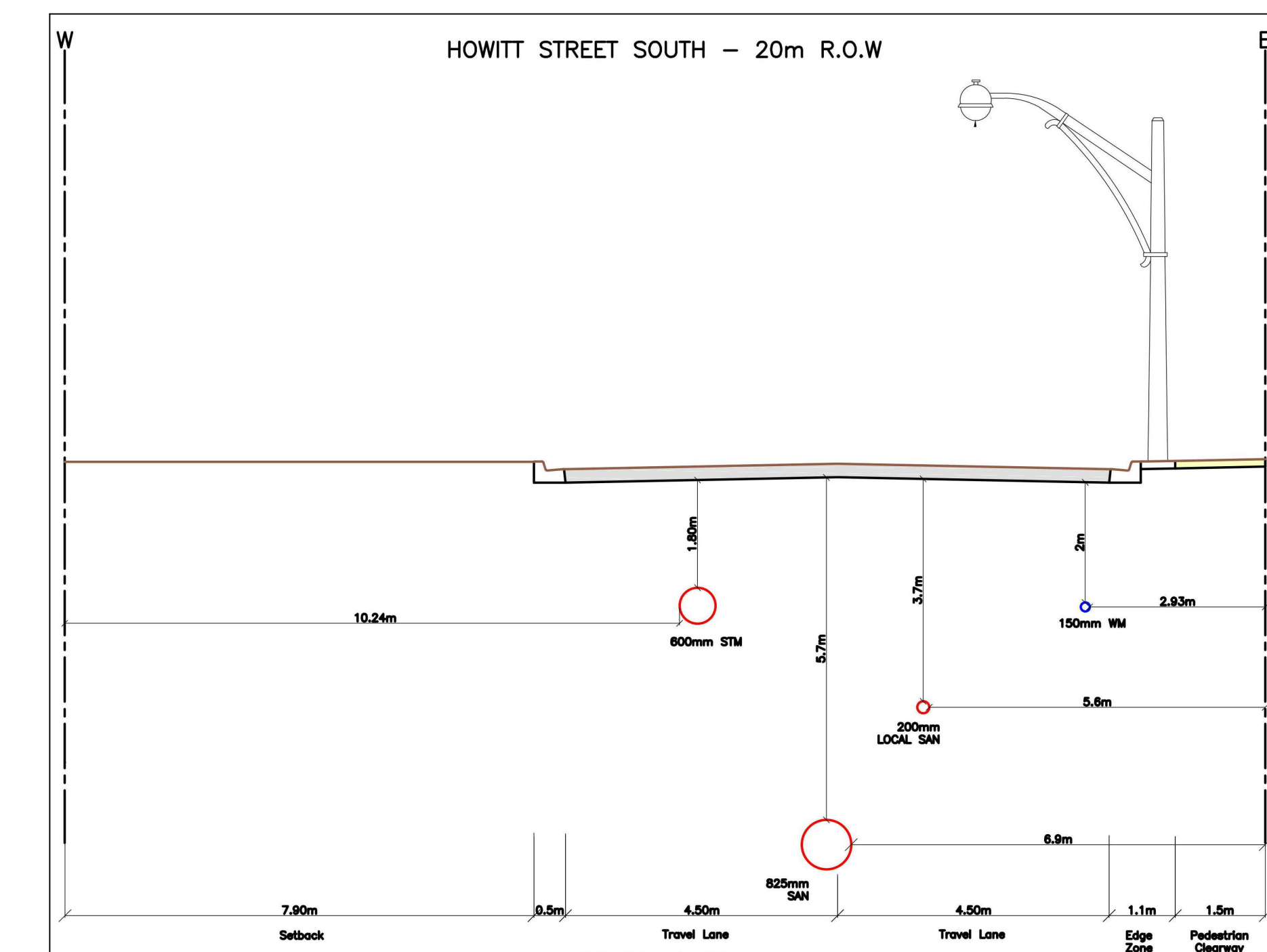
P4 PHOTO



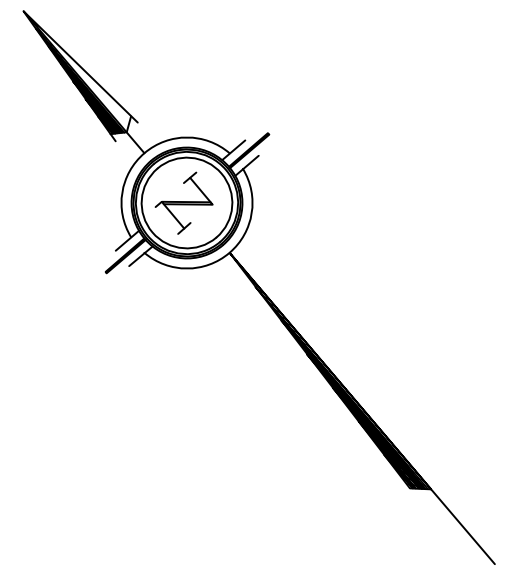
1 TYPICAL CROSS SECTION
NTS



2 TYPICAL CROSS SECTION
NTS



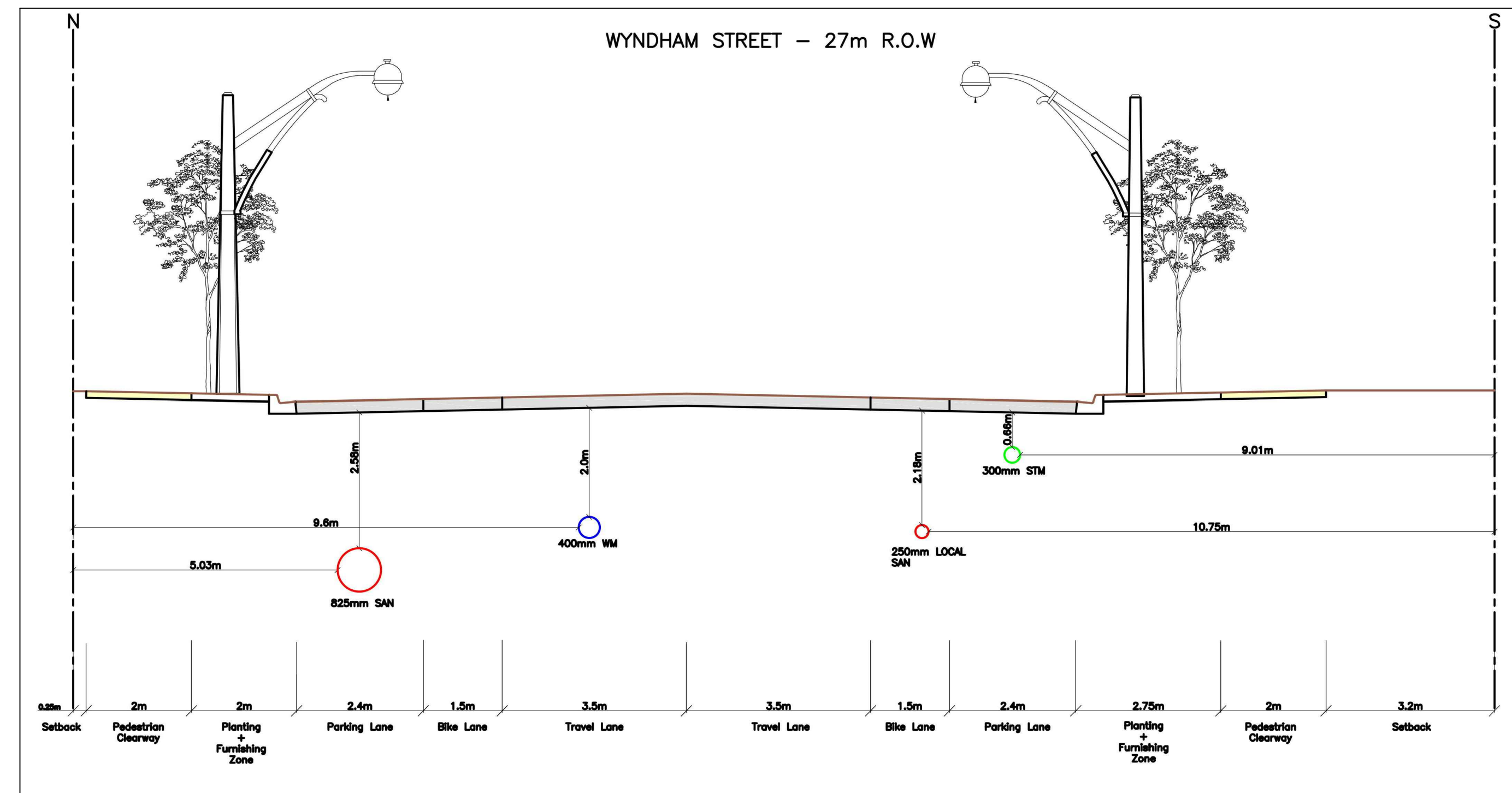
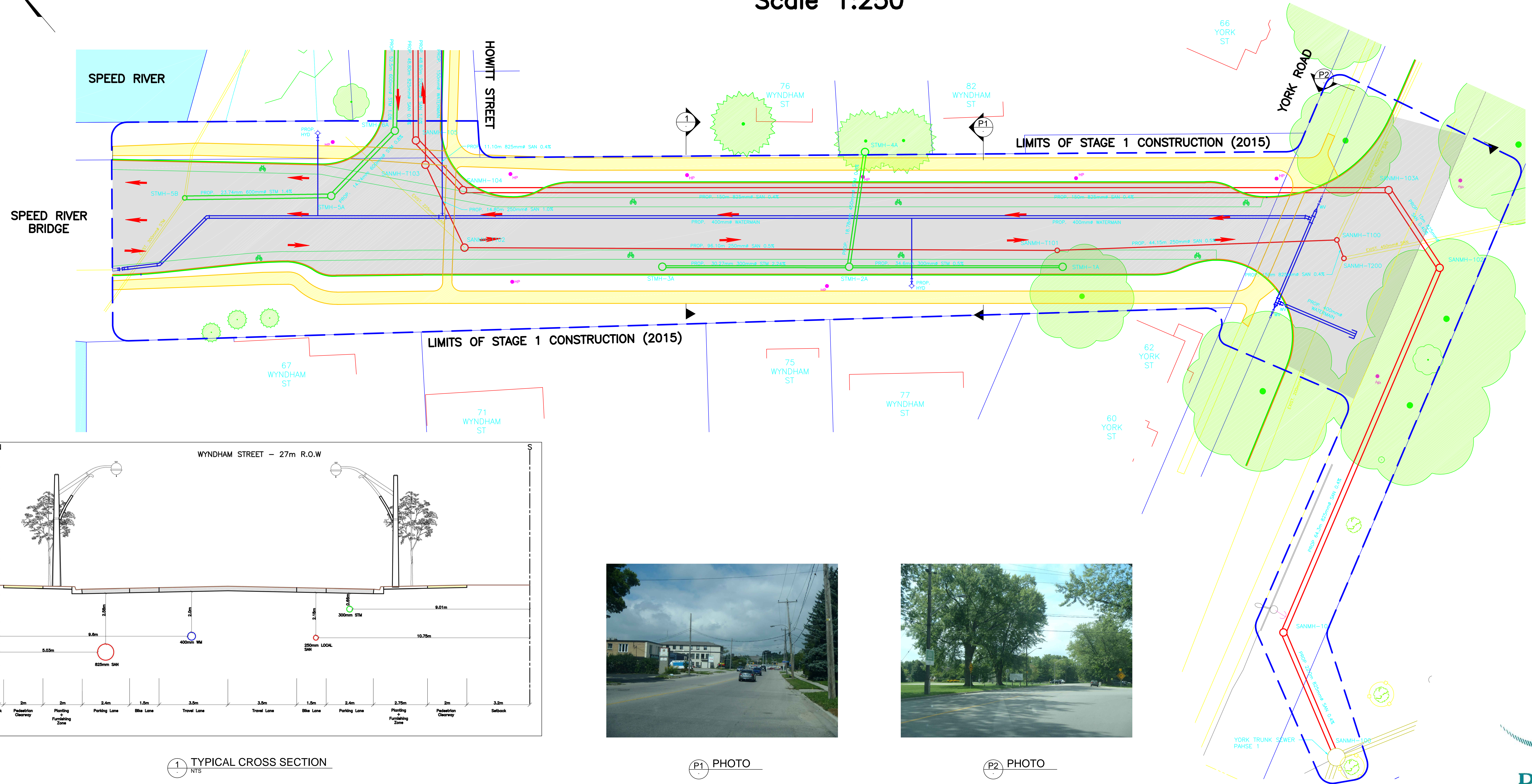
3 TYPICAL CROSS SECTION
NTS



Wyndham Street Reconstruction – Stage 1 (2015)

Speed River Bridge to York Road

Scale 1:250



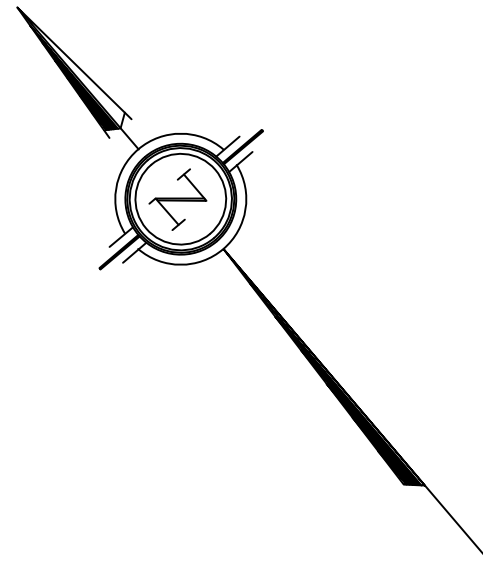
1 TYPICAL CROSS SECTION
NTS



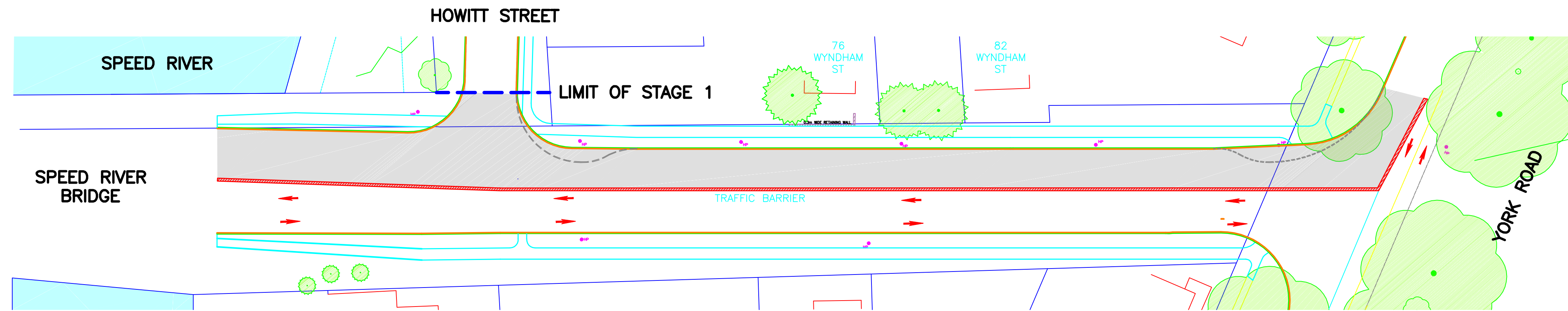
P1 PHOTO



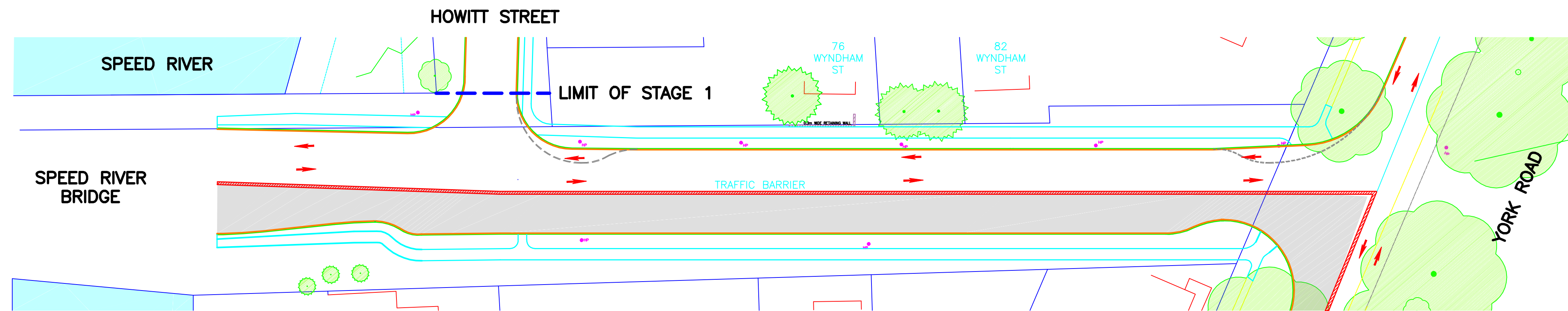
P2 PHOTO



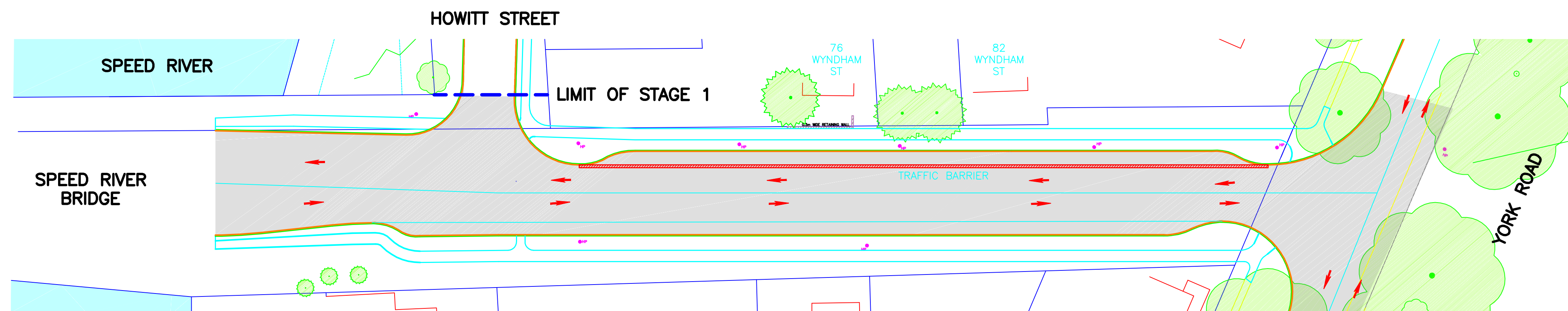
Wyndham Street Construction Phasing – Stage 1 (2015) Speed River Bridge to York Road Scale 1:500



PHASE ONE CONSTRUCTION – SINGLE LANE TRAFFIC IN EACH DIRECTION MAINTAINED ON SOUTH WEST SIDE OF WYNDHAM STREET AND NORTH WEST QUADRANT OF YORK ROAD AND WYNDHAM STREET INTERSECTION



PHASE TWO CONSTRUCTION – SINGLE LANE TRAFFIC IN EACH DIRECTION MAINTAINED ON NORTH EAST SIDE OF WYNDHAM STREET AND NORTH EAST QUADRANT OF YORK ROAD AND WYNDHAM STREET INTERSECTION



PHASE THREE CONSTRUCTION – SINGLE LANE TRAFFIC IN EACH DIRECTION MAINTAINED ON WYNDHAM STREET THROUGH CENTRE LANES