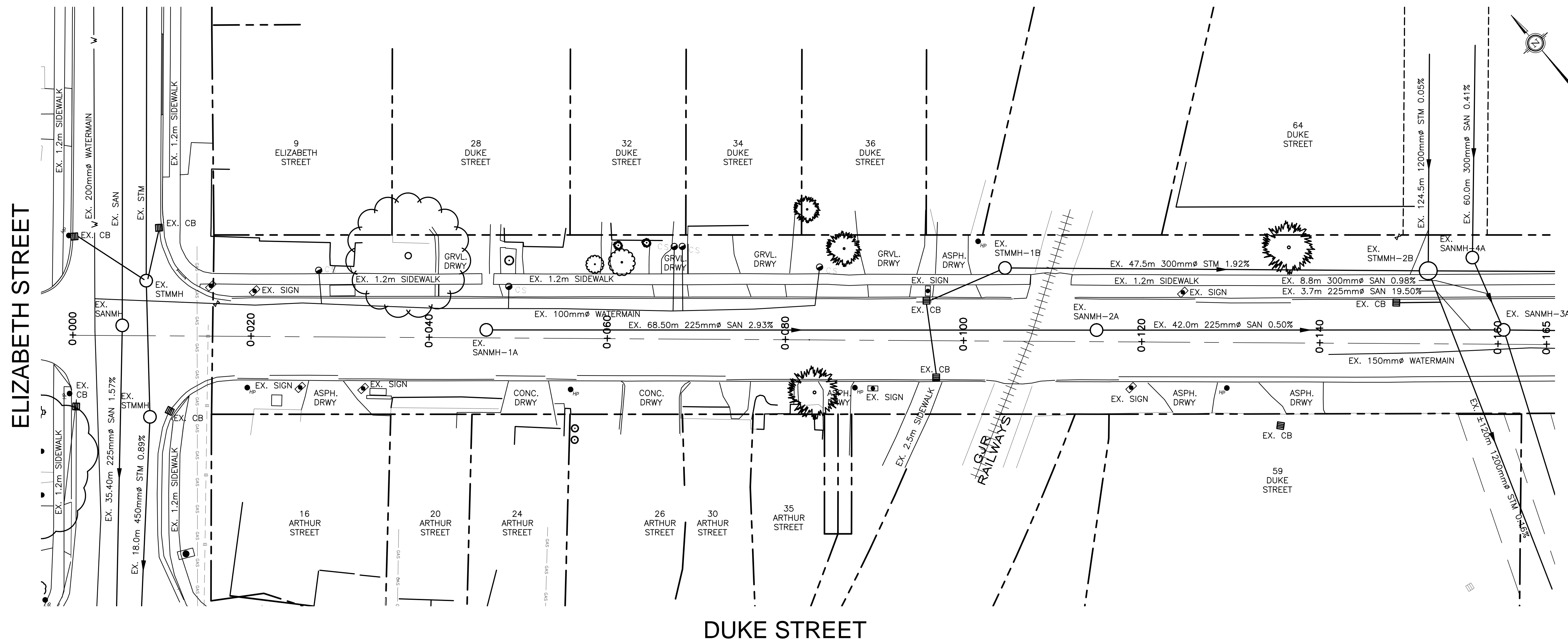


SHEET No. 1/3

DUKE STREET SITE

KEY PLAN Scale: NOT TO SCALE



DUKE STREET



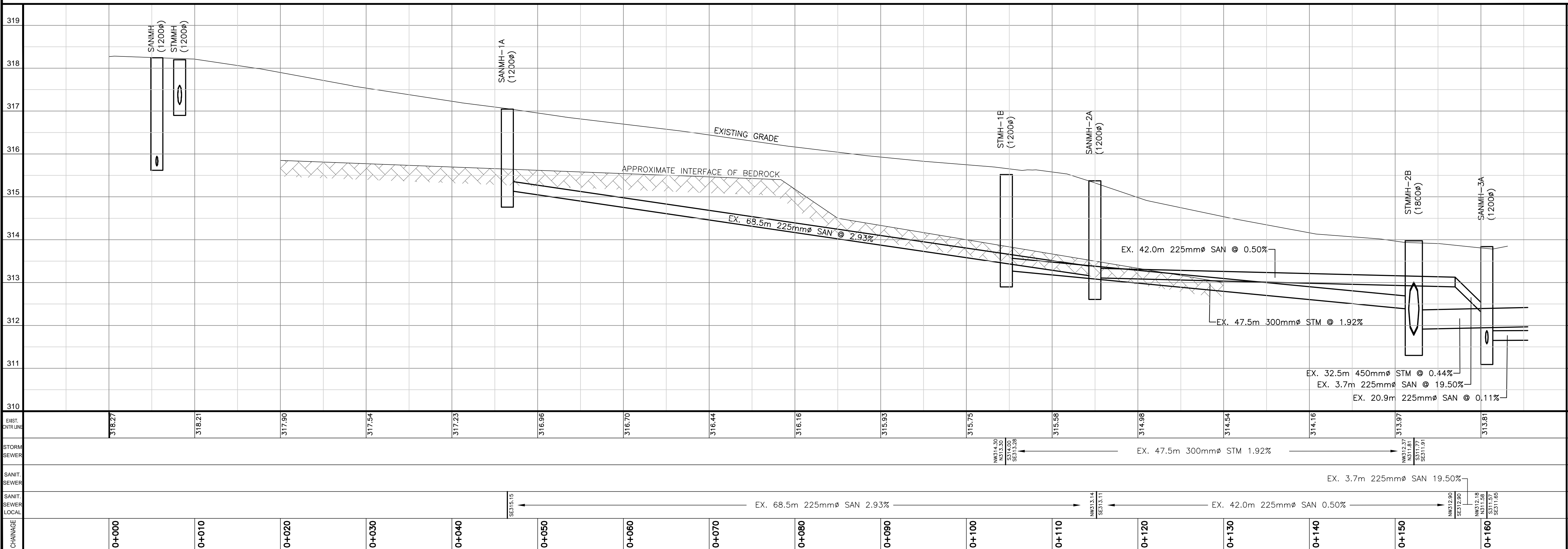
THE POSITION OF POLES, LINES, CONDUITS, WATERMAINS, SEWERS AND OTHER UNDERGROUND UTILITIES AND STRUCTURES IS NOT NECESSARILY SHOWN ON THE CONTRACT DRAWINGS, AND WHERE SHOWN, THE ACCURACY OF THE POSITION OF SUCH UTILITIES AND STRUCTURES IS NOT GUARANTEED. BEFORE STARTING WORK, THE CONTRACTOR SHALL INFORM HIMSELF OF THE EXACT LOCATION OF ALL SUCH UTILITIES AND STRUCTURES, AND SHALL ASSUME ALL LIABILITY FOR DAMAGE TO THEM.

No.	DATE	DESCRIPTION	BY:	CHKD.

ISSUES/REVISIONS

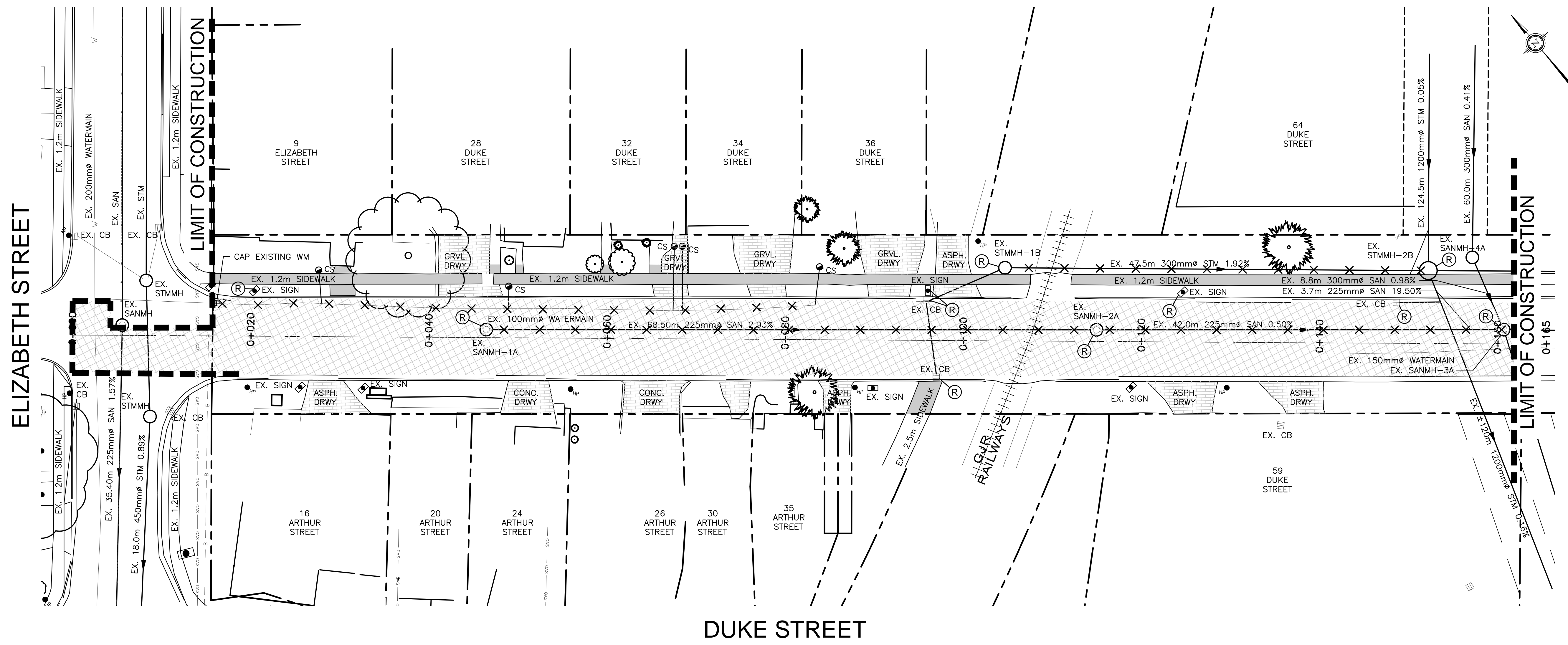
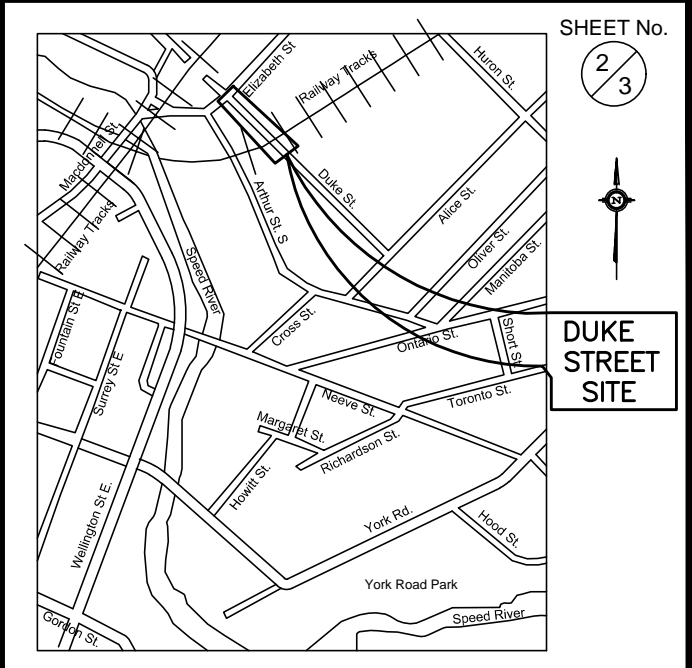
ENGINEERING AND CAPITAL INFRASTRUCTURE SERVICES
 STAGE IV: ARTHUR STREET RECON. (DUKE ST. FROM ELIZABETH ST. TO 50m SOUTH OF TRACKS) ARTHUR STREET SANITARY TRUNK SEWER

EXISTING CONDITIONS
0+000 to 0+165



CHANGE	0+000	0+010	0+020	0+030	0+040	0+050	0+060	0+070	0+080	0+090	0+100	0+110	0+120	0+130	0+140	0+150	0+160
EXIST. CENTRELINE	318.27	318.21	317.90	317.54	317.23	316.98	316.70	316.44	316.16	315.93	315.75	315.58	314.98	314.54	314.16	313.97	313.81
STORM SEWER													EX. 47.5m 300mm STM 1.92%				
SANITARY SEWER																EX. 3.7m 225mm SAN 19.50%	
SANITARY SEWER LOCAL						EX. 68.5m 225mm SAN 2.93%							EX. 42.0m 225mm SAN 0.50%				

EXISTING CENTRELINE	SCALES: HOR: 1:250 VER: 1:50
STORM SEWER	DATE DRAWN: APRIL 2018
SANITARY SEWER	DRAWN BY: HJF CHECKED BY: DV
SANITARY SEWER LOCAL	CONSULTANT DRAWING No. 141143
CHAINAGE	CITY CONTRACT No. D01 REV. 0

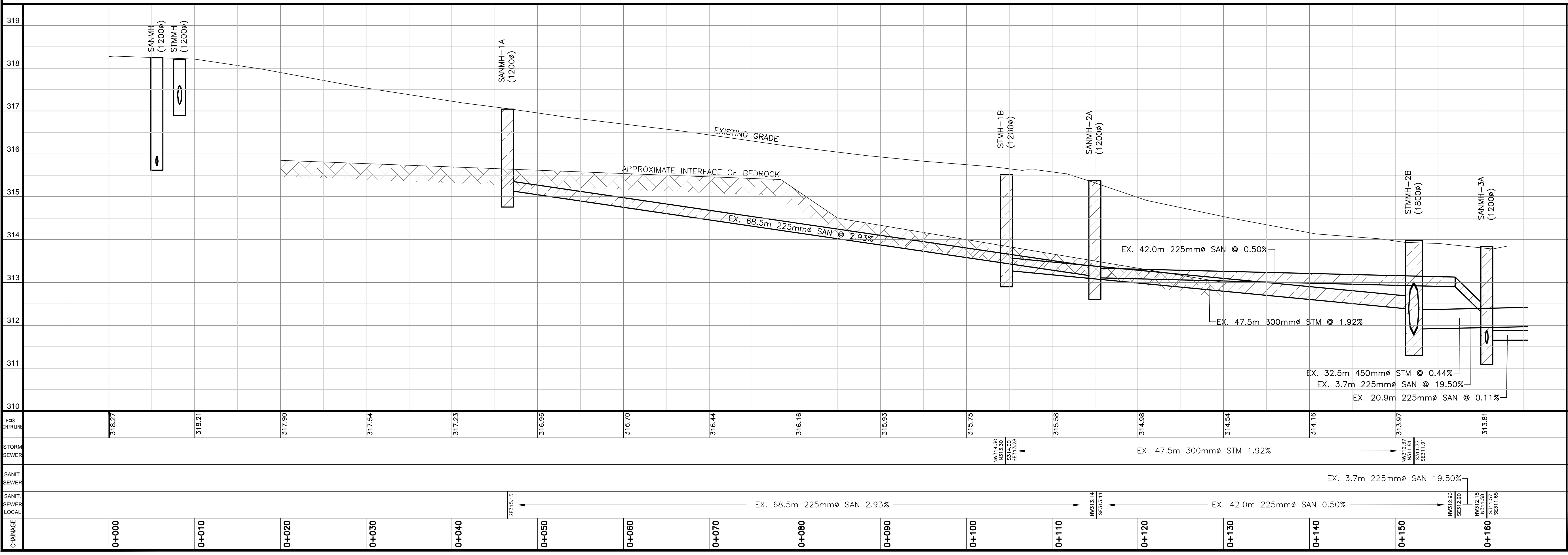


- LEGEND**
- REMOVE ASPHALT, GRAVEL SHOULDER & CURB
 - REMOVE SIDEWALK
 - REMOVE DRIVEWAYS
 - REMOVE SANITARY/STORM SEWERS & WATERMAIN (PROFILE)
 - REMOVE SANITARY/STORM SEWERS & WATERMAIN (PLAN)
 - REMOVE STRUCTURES (DISPOSE OFF SITE)
 - ADJUST STRUCTURES BY CONTRACTOR
 - REMOVE TREE



THE POSITION OF POLES, LINES, CONDUITS, WATERMANS, SEWERS AND OTHER UNDERGROUND UTILITIES AND STRUCTURES IS NOT NECESSARILY SHOWN ON THE CONTRACT DRAWINGS, AND WHERE SHOWN, THE ACCURACY OF THE POSITION OF SUCH UTILITIES AND STRUCTURES IS NOT GUARANTEED. BEFORE STARTING WORK, THE CONTRACTOR SHALL INFORM HIMSELF OF THE EXACT LOCATION OF ALL SUCH UTILITIES AND STRUCTURES, AND SHALL ASSUME ALL LIABILITY FOR DAMAGE TO THEM.

DUKE STREET



No.	DATE	DESCRIPTION	BY:	CHKD.
01			DV	DYO

ISSUES/REVISIONS

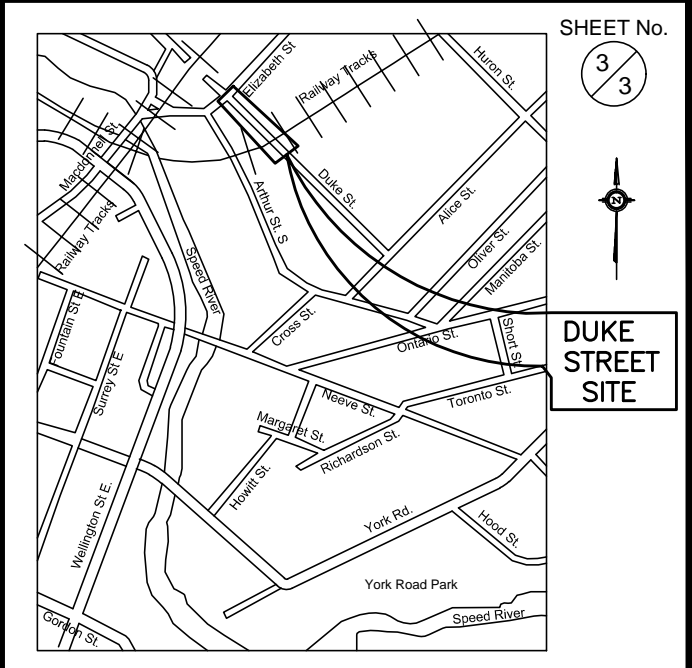
CITY OF Guelph

ENGINEERING AND CAPITAL INFRASTRUCTURE SERVICES

STAGE IV: ARTHUR STREET RECON. (DUKE ST. FROM ELIZABETH ST. TO 50m SOUTH OF TRACKS) ARTHUR STREET SANITARY TRUNK SEWER

REMOVALS
0+000 to 0+165

EXISTING CENTRELINE	SCALE: HOR: 1:250 VER: 1:50
STORM SEWER	DATE DRAWN: APRIL 2018
SANITARY SEWER	DRAWN BY: HJF CHECKED BY: DV
SANITARY SEWER LOCAL	CONSULTANT DRAWING No. 141143
CHAINAGE	CITY CONTRACT No.
	CITY REFERENCE No. D02 REV. 0



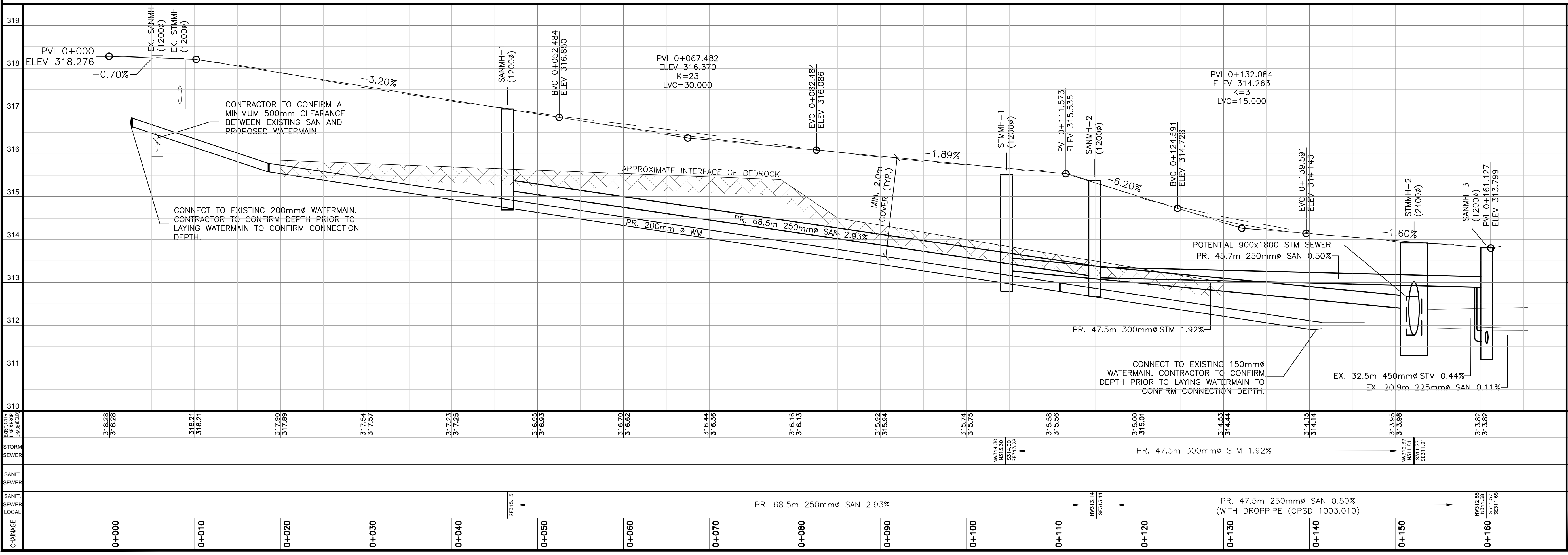
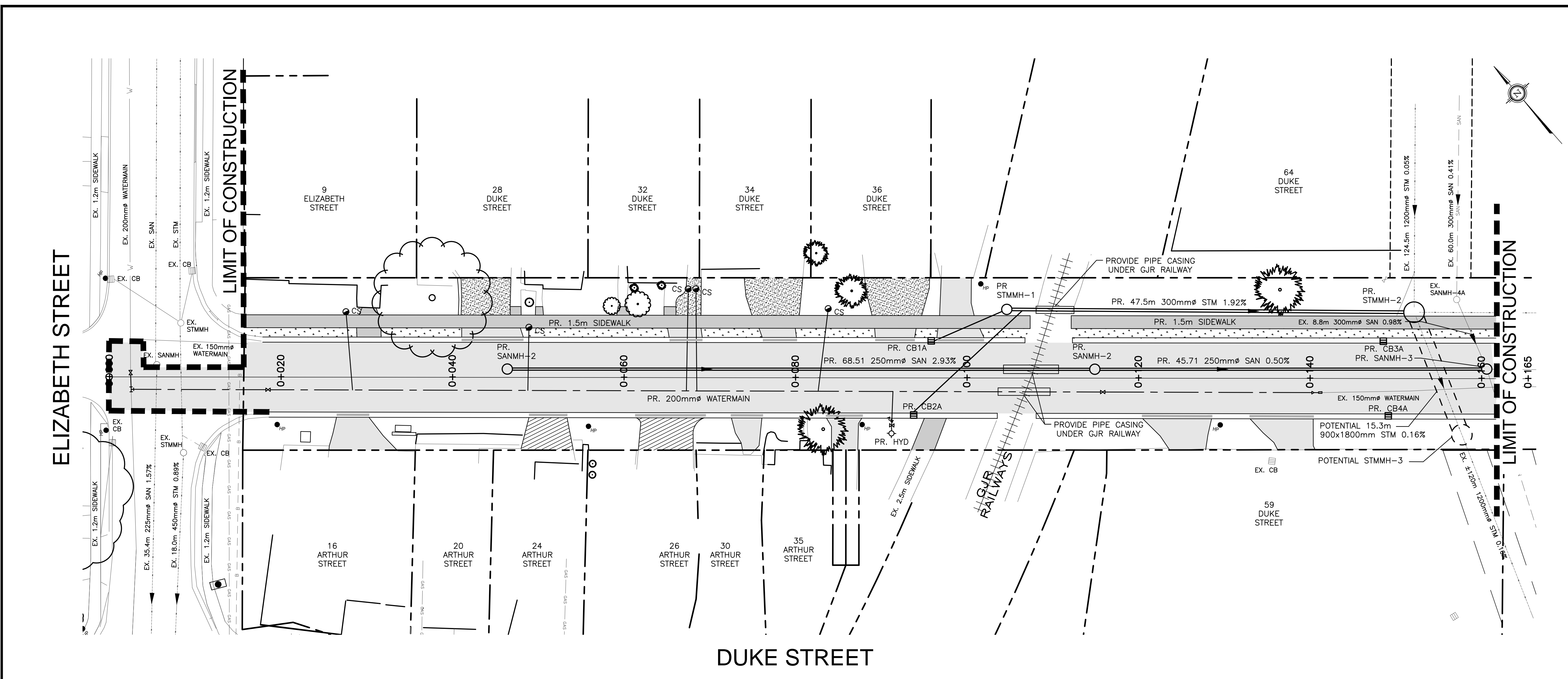
KEY PLAN Scale: NOT TO SCALE

LEGEND

- PROP. SANITARY SEWER
- PROP. STORM SEWER
- PROP. WATERMAIN
- PROP. SIDEWALK
- PROP. DROPCURB
- PROP. ASPHALT
- PROP. TEMPORARY WORKS
- PROP. GRAVEL DRIVEWAY
- PROP. CONCRETE DRIVEWAY
- PROP. BRICK DRIVEWAY
- 100mm TOPSOIL AND SOD



THE POSITION OF POLES, LINES, CONDUITS, WATERMANS, SEWERS AND OTHER UNDERGROUND UTILITIES AND STRUCTURES IS NOT NECESSARILY SHOWN ON THE CONTRACT DRAWINGS, AND WHERE SHOWN, THE ACCURACY OF THE POSITION OF SUCH UTILITIES AND STRUCTURES IS NOT GUARANTEED. BEFORE STARTING WORK, THE CONTRACTOR SHALL INFORM HIMSELF OF THE EXACT LOCATION OF ALL SUCH UTILITIES AND STRUCTURES, AND SHALL ASSUME ALL LIABILITY FOR DAMAGE TO THEM.



No.	DATE	DESCRIPTION	BY:	CHKD.
01			DV	DY0

ISSUES/REVISIONS

CITY OF Guelph

ENGINEERING AND CAPITAL INFRASTRUCTURE SERVICES

STAGE IV: ARTHUR STREET RECON. (DUKE ST. FROM ELIZABETH ST. TO 50m SOUTH OF TRACKS) ARTHUR STREET SANITARY TRUNK SEWER

NEW CONSTRUCTION
0+000 to 0+165

EXISTING CENTRELINE & PROPOSED GRADE (BOLD)	SCALES: HOR: 1:250 VER: 1:50
STORM SEWER	DATE DRAWN: APRIL 2018
SANITARY SEWER	DRAWN BY: HJF CHECKED BY: DV
SANITARY SEWER LOCAL	CONSULTANT DRAWING NO. 141143
CHAINAGE	CITY CONTRACT No.
	CITY REFERENCE No. D03 REV. 0