

Projection: UTM 17N NAD83
 Produced by the City of Guelph
 Planning Services
 Adopted: July 27, 2010, Consolidated: June 2014

Official Plan Amendment 42
CITY OF GUELPH
OFFICIAL PLAN
SCHEDULE 1:
LAND USE PLAN



This Schedule is to be read in conjunction with the other Schedules and the text of The Official Plan

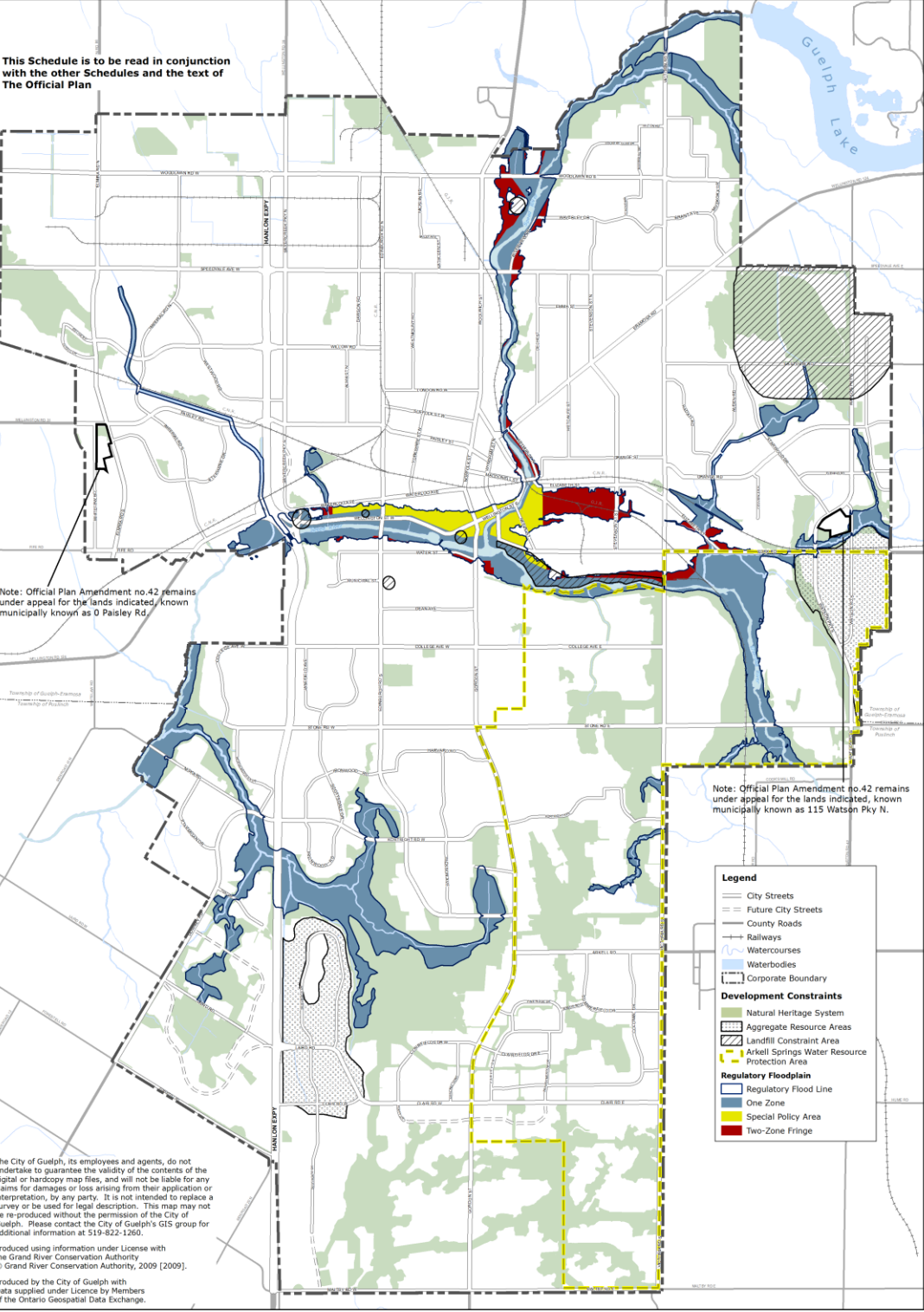
Note: Official Plan Amendment no.42 remains under appeal for the lands indicated, known municipally known as 0 Paisley Rd.

Note: Official Plan Amendment no.42 remains under appeal for the lands indicated, known municipally known as 115 Watson Pky N.

The City of Guelph, its employees and agents, do not undertake to guarantee the validity of the contents of the digital or hardcopy map files, and will not be liable for any claims for damages or loss arising from their application or interpretation, by any party. It is not intended to replace a survey or be used for legal description. This map may not be re-produced without the permission of the City of Guelph. Please contact the City of Guelph's GIS group for additional information at 519-822-1260.

Produced using information under License with the Grand River Conservation Authority
 © Grand River Conservation Authority, 2009 [2009].

Produced by the City of Guelph with Data supplied under License by Members of the Ontario Geospatial Data Exchange.



Legend

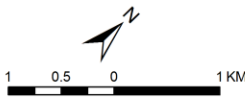
- City Streets
- Future City Streets
- County Roads
- Railways
- Watercourses
- Waterbodies
- Corporate Boundary

Development Constraints

- Natural Heritage System
- Aggregate Resource Areas
- Landfill Constraint Area
- Arkel Springs Water Resource Protection Area

Regulatory Floodplain

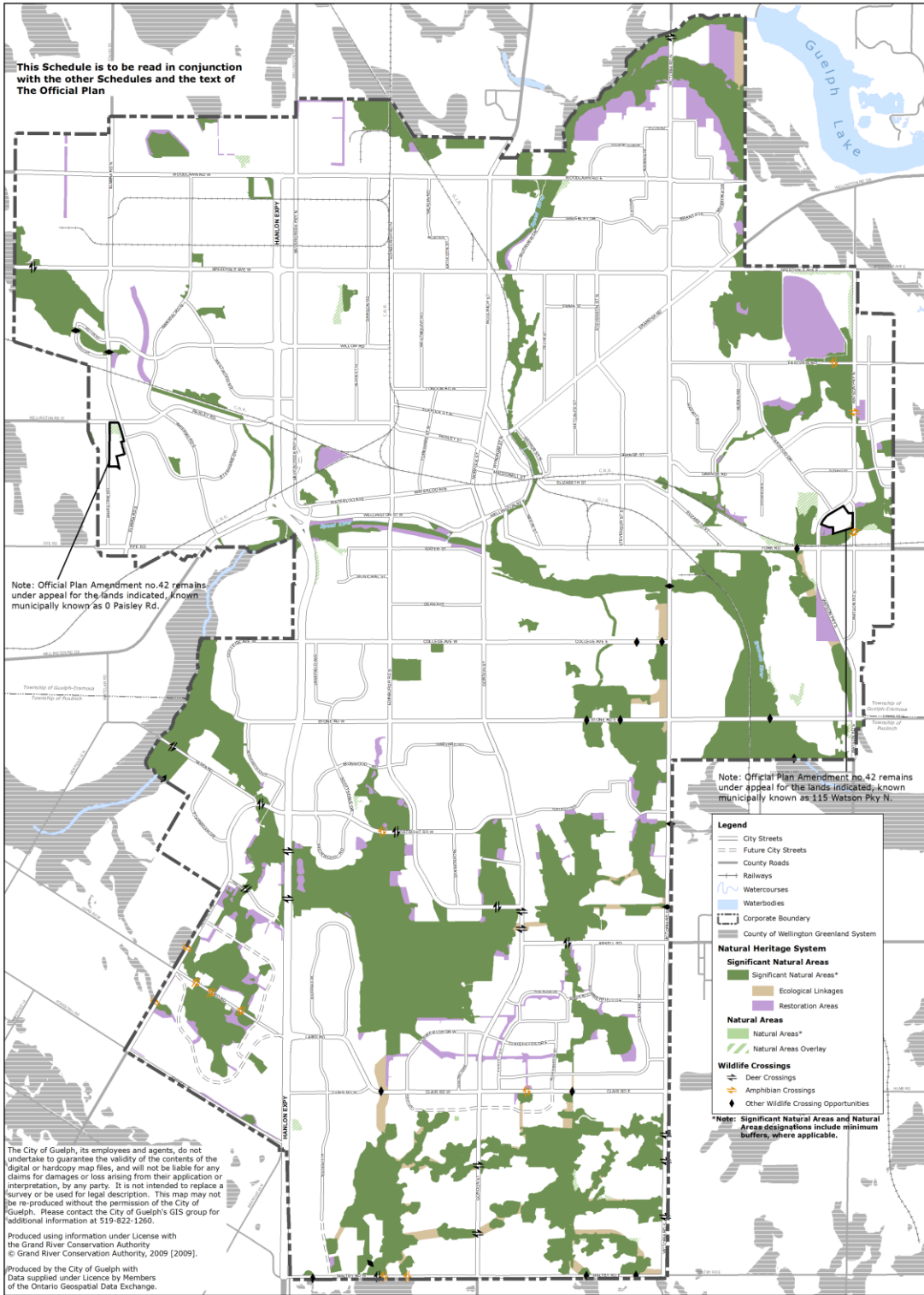
- Regulatory Flood Line
- One Zone
- Special Policy Area
- Two-Zone Fringe



Projection: UTM 17N NAD83
 Produced by the City of Guelph
 Planning Services
 Adopted: July 27, 2010, Consolidated: June 2014

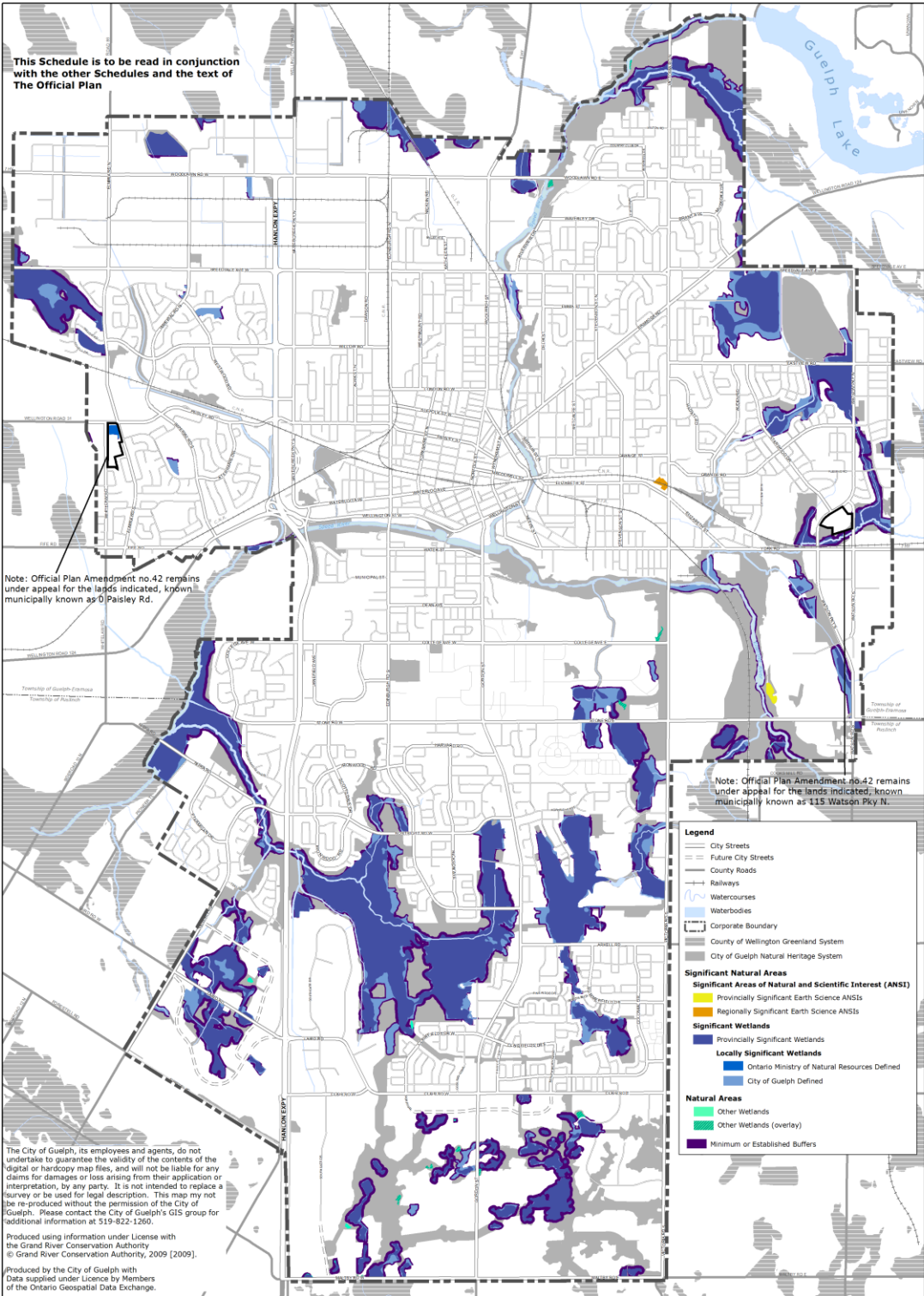
Official Plan Amendment 42
CITY OF GUELPH
OFFICIAL PLAN
SCHEDULE 2:
DEVELOPMENT CONSTRAINTS



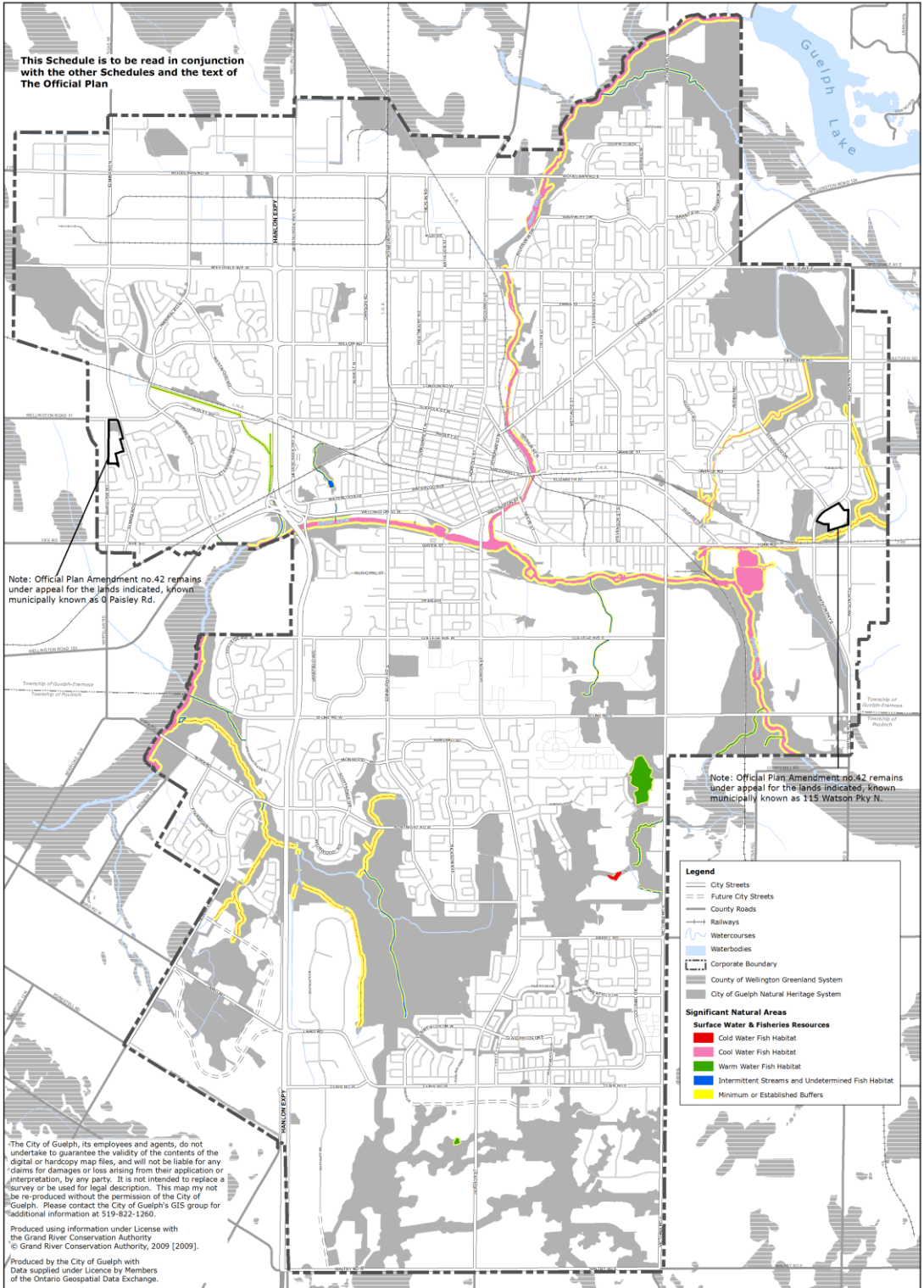


Official Plan Amendment 42
CITY OF GUELPH
OFFICIAL PLAN
SCHEDULE 10:
NATURAL HERITAGE SYSTEM
Natural Heritage System

Projection: UTM 17N NAD83
 Produced by the City of Guelph
 Planning Services
 Adopted: July 27, 2010, Consolidated: June 2014



This Schedule is to be read in conjunction with the other Schedules and the text of The Official Plan



Note: Official Plan Amendment no.42 remains under appeal for the lands indicated, known municipally known as O Paisley Rd.

Note: Official Plan Amendment no.42 remains under appeal for the lands indicated, known municipally known as 115 Watson Pky N.

Legend

- City Streets
- Future City Streets
- County Roads
- Railways
- Watercourses
- Waterbodies
- Corporate Boundary
- County of Wellington Greenland System
- City of Guelph Natural Heritage System

Significant Natural Areas

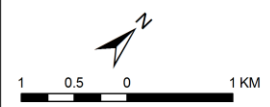
Surface Water & Fisheries Resources

- Cold Water Fish Habitat
- Cool Water Fish Habitat
- Warm Water Fish Habitat
- Intermittent Streams and Undetermined Fish Habitat
- Minimum or Established Buffers

The City of Guelph, its employees and agents, do not undertake to guarantee the validity of the contents of the digital or hardcopy map files, and will not be liable for any claims for damages or loss arising from their application or interpretation, by any party. It is not intended to replace a survey or be used for legal description. This map may not be reproduced without the permission of the City of Guelph. Please contact the City of Guelph's GIS group for additional information at 519-822-1260.

Produced using information under License with the Grand River Conservation Authority, 2009 [2009]. © Grand River Conservation Authority, 2009 [2009].

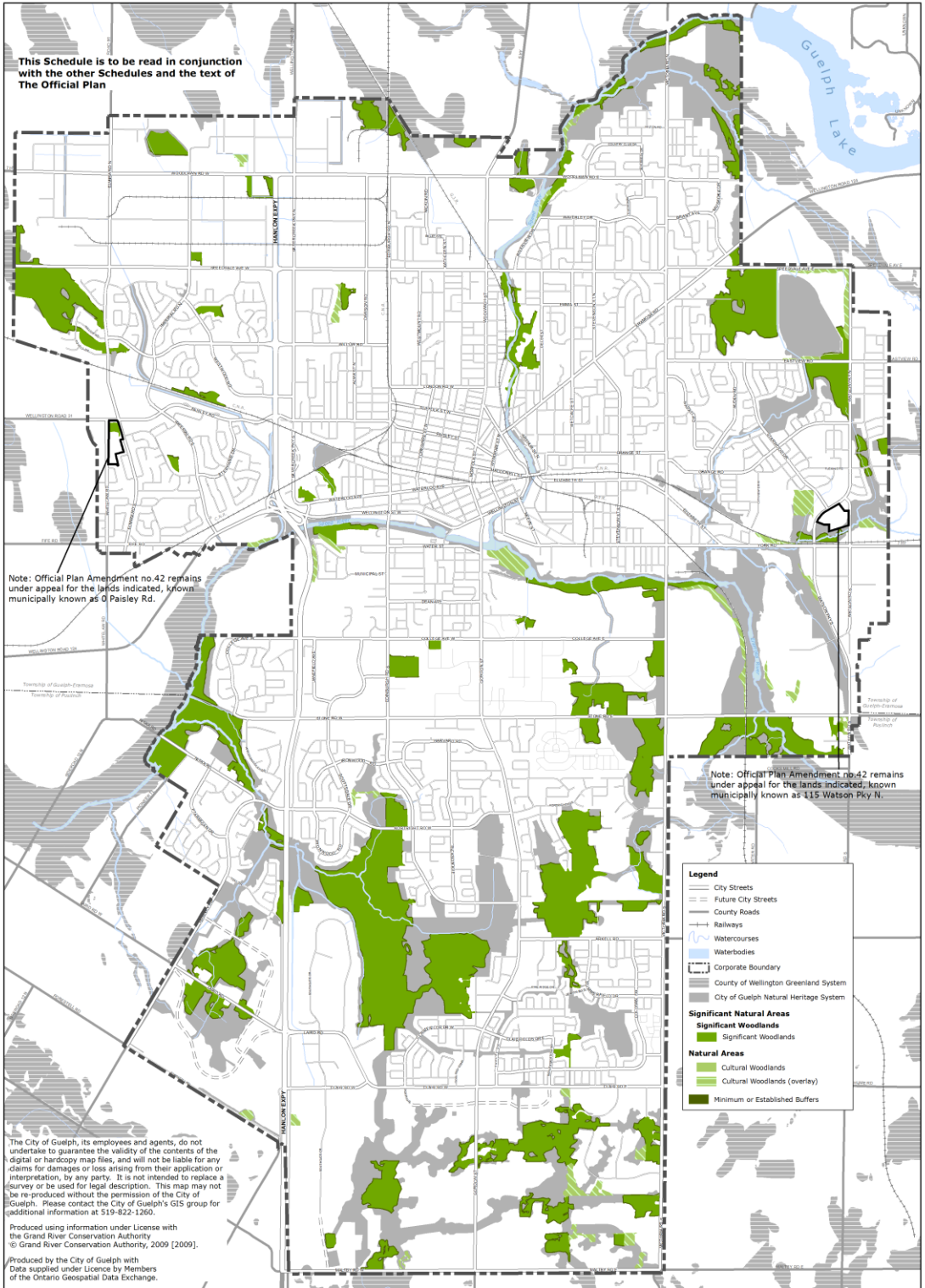
Produced by the City of Guelph with Data supplied under License by Members of the Ontario Geospatial Data Exchange.



Official Plan Amendment 42
CITY OF GUELPH
OFFICIAL PLAN
SCHEDULE 10B:
NATURAL HERITAGE SYSTEM
Surface Water and Fish Habitat



Projection: UTM 17N NAD83
 Produced by the City of Guelph
 Planning Services
 Adopted: July 27, 2010, Consolidated: June 2014

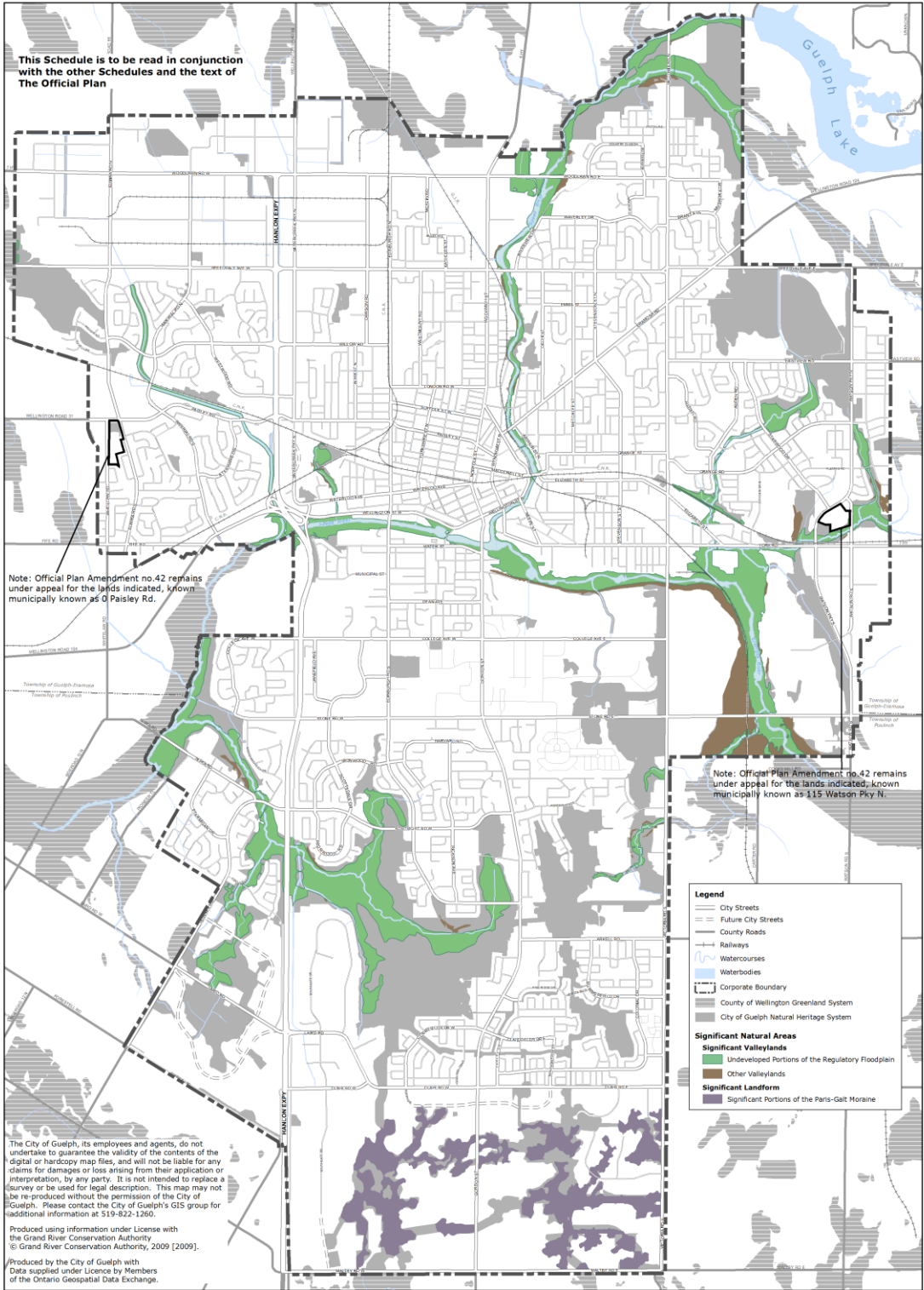


1 0.5 0 1 KM

Projection: UTM 17N NAD83
Produced by the City of Guelph
Planning Services
Adopted: July 27, 2010, Consolidated: June 2014

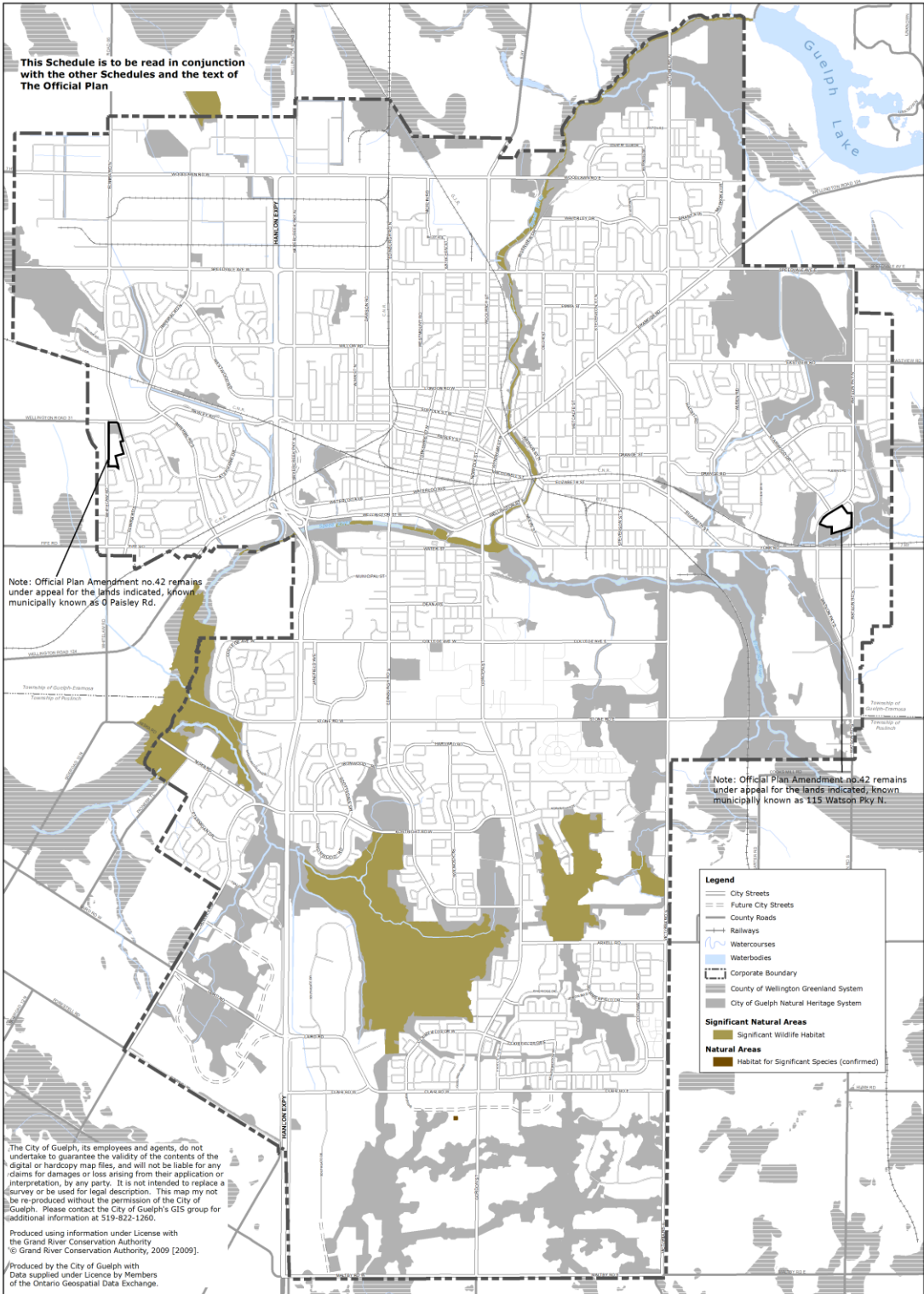
Official Plan Amendment 42
CITY OF GUELPH
OFFICIAL PLAN
SCHEDULE 10C:
NATURAL HERITAGE SYSTEM
Significant Woodlands

CITY OF Guelph
Making a Difference



Official Plan Amendment 42
CITY OF GUELPH
OFFICIAL PLAN
SCHEDULE 10D:
NATURAL HERITAGE SYSTEM
Significant Valleylands & Significant Landform

Projection: UTM 17N NAD83
Produced by the City of Guelph
Planning Services
Adopted: July 27, 2010, Consolidated: June 2014



This Schedule is to be read in conjunction with the other Schedules and the text of The Official Plan

Note: Official Plan Amendment no.42 remains under appeal for the lands indicated, known municipally known as O Paisley Rd.

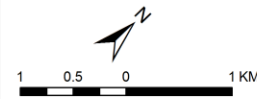
Note: Official Plan Amendment no.42 remains under appeal for the lands indicated, known municipally known as 115 Watson Pky N.

- Legend**
- City Streets
 - Future City Streets
 - County Roads
 - Railways
 - Watercourses
 - Waterbodies
 - Corporate Boundary
 - County of Wellington Greenland System
 - City of Guelph Natural Heritage System
- Significant Natural Areas**
- Significant Wildlife Habitat
- Natural Areas**
- Habitat for Significant Species (confirmed)

The City of Guelph, its employees and agents, do not undertake to guarantee the validity of the contents of the digital or hardcopy map files, and will not be liable for any claims for damages or loss arising from their application or interpretation, by any party. It is not intended to replace a survey or be used for legal description. This map may not be reproduced without the permission of the City of Guelph. Please contact the City of Guelph's GIS group for additional information at: 519-822-1260.

Produced using information under License with the Grand River Conservation Authority
 © Grand River Conservation Authority, 2009 [2009].

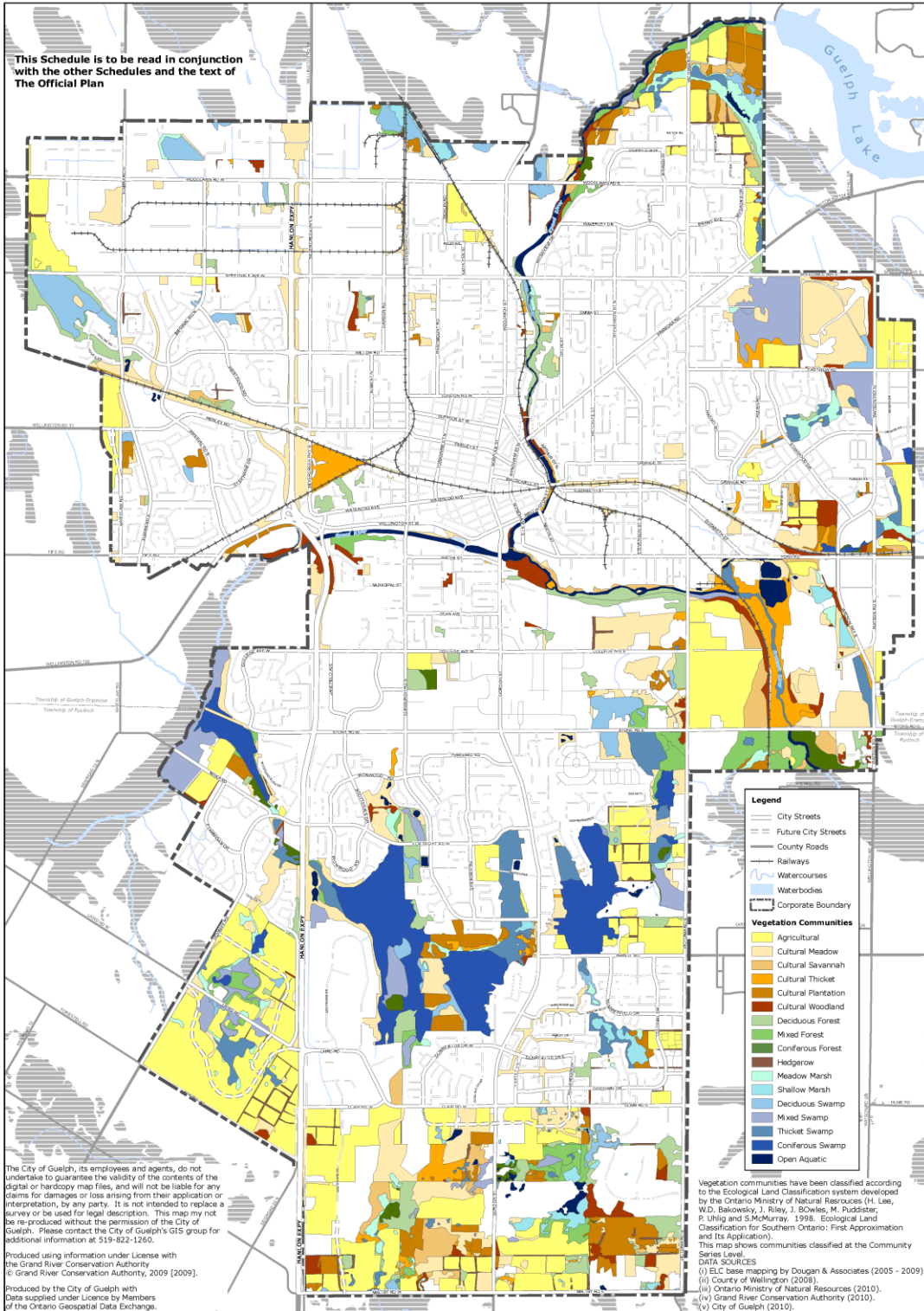
Produced by the City of Guelph with Data supplied under License by Members of the Ontario Geospatial Data Exchange.



Projection: UTM 17N NAD83
 Produced by the City of Guelph
 Planning Services
 Adopted: July 27, 2010, Consolidated: June 2014

Official Plan Amendment 42
CITY OF GUELPH
OFFICIAL PLAN
SCHEDULE 10E:
NATURAL HERITAGE SYSTEM
Significant Wildlife Habitat & Habitat for Significant Species





Official Plan Amendment 42
CITY OF GUELPH
OFFICIAL PLAN
APPENDIX 1:
NATURAL HERITAGE STRATEGY
Ecological Land Classifications

CITY OF Guelph
 Making a Difference

0 0.5 1 2KM

Projection: UTM 17N NAD 83
 Produced by the City of Guelph
 Community Design and Development Services, Planning Services
 July 27, 2010

19a_mnp01mnp01_Schedule1Appendix1_20100727.mxd